

Lavoro con impiallacciatura

Lavoro con macchine stazionarie

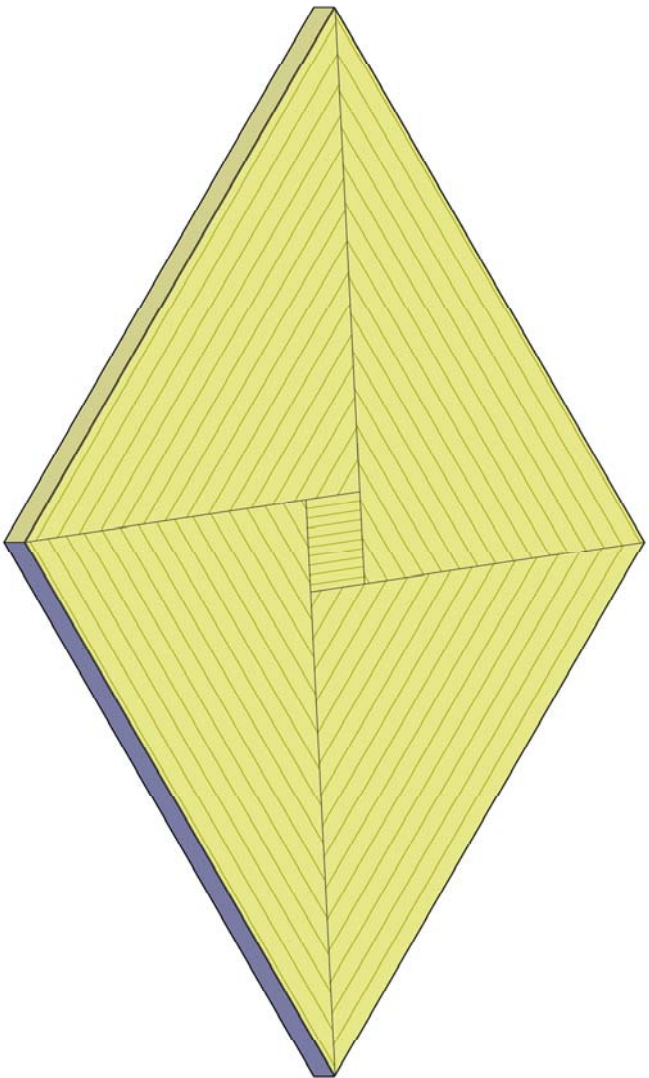
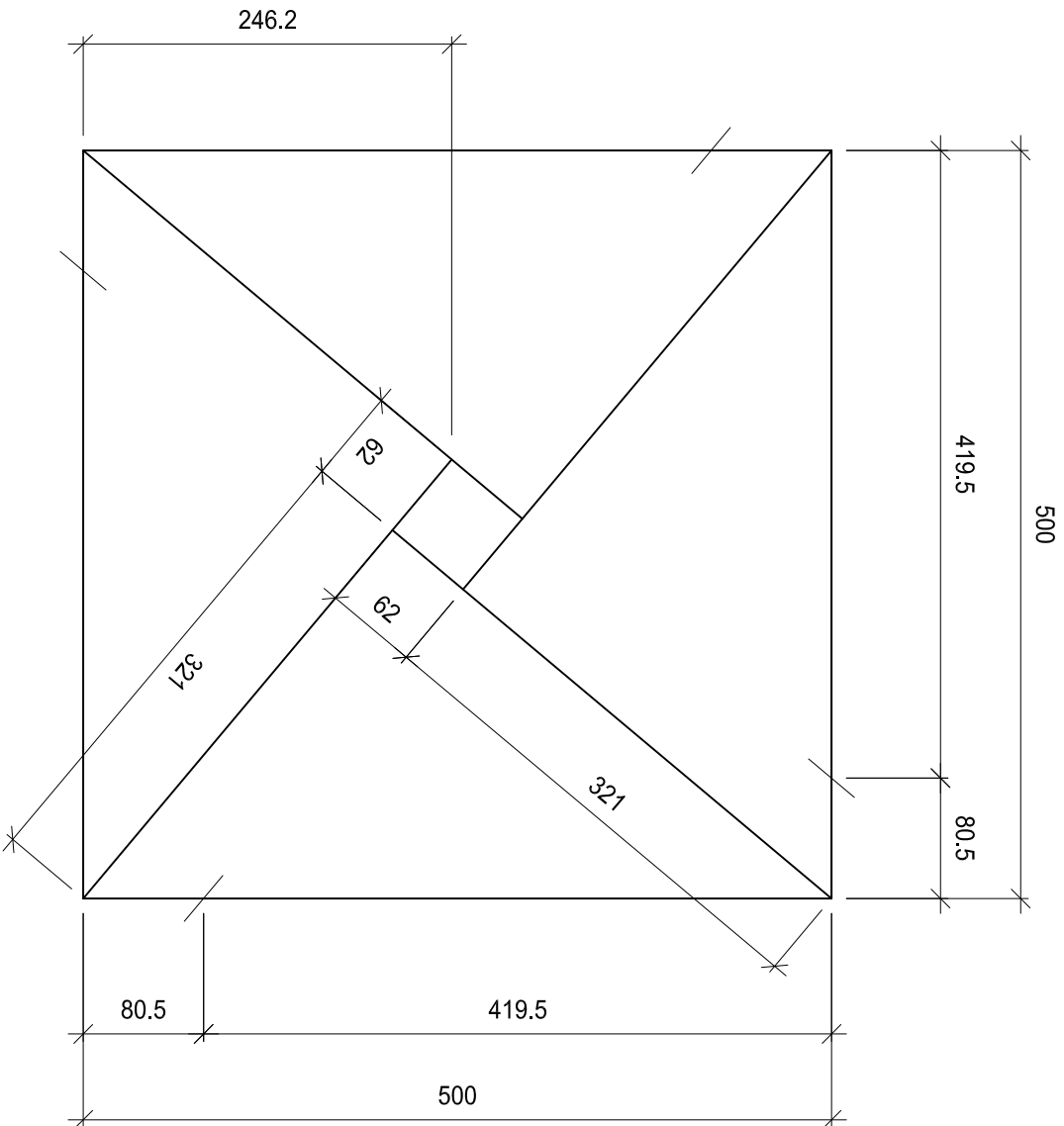
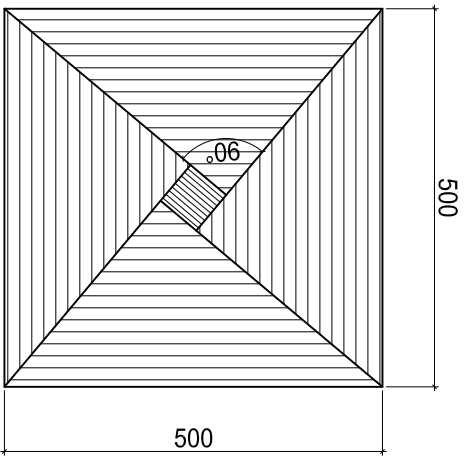
Taglierina per impiallaccature
Pressa
Levigatrice a nastro
Sezionatrice verticale (Striebig)

Lavori

Banco	Tracciatura (senza controllo)
Giuntare l'impiallacciatura	Tagliare l'impiallacciatura
Banco	Assemblare l'impiallacciatura
Pressa	Stesura della colla, pressare
Banco	Retificare l'impiallacciatura
Sez. Verticale (Striebig)	Tagliare nel formato indicato
Levigatrice a nastro	Levigare la superficie
Banco	Pulire e carteggiare

Lista del materiale	Mat.	Pz.	Lung.	Larg.	Spes.
Pannello	MDF	1	500	500	19
Laterali	Imp.	4	500	246.2	0.6
Centrale	Imp.	1	62	62	0.6
Controplaccaggio	Imp.	1	500	500	0.6

Vista dall'alto



1

il falegname

l'uomo che fa

www.luomochefai.ch

Lavoro pratico

Esame fondamentale di base
6.Semestre

Associazione Svizzera Fabbricanti Mobili
e Serramenti

No. lavoro: 13a-P.1

Scala: 1:10 / 1:5

Dim. Foglio: 420 x 297

Data: 11.03.2013

Disegnatore ls

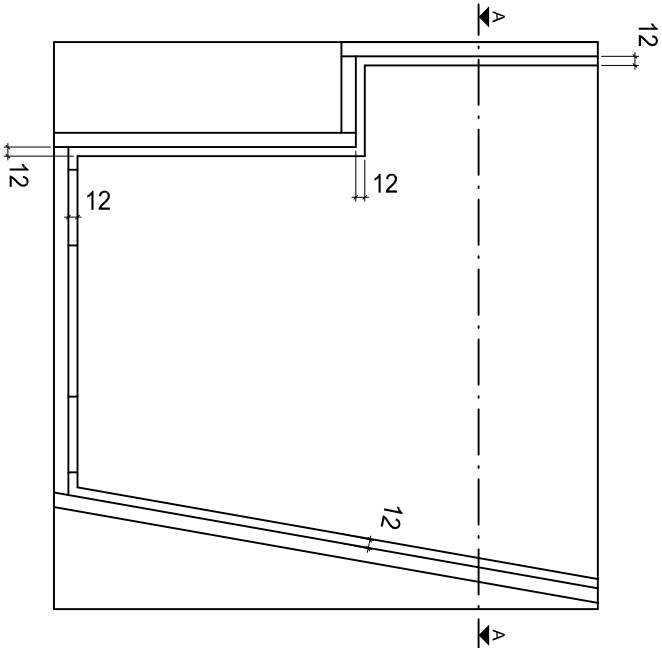
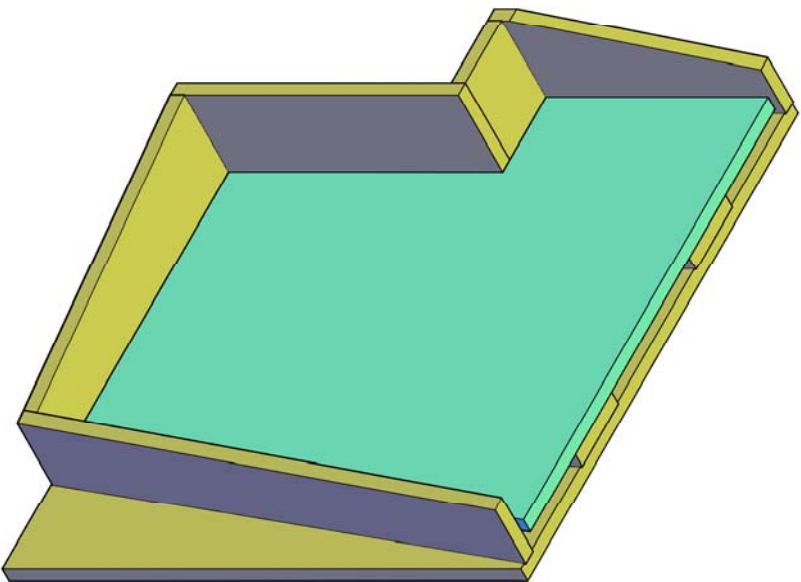
Costruzione di un modello

Banco	Montare il pannello con doppio Doplex

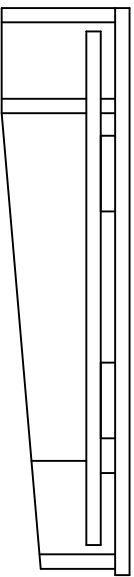
Aluti consentiti:

Tracciatore parallelo	
Seghetto alternativo	
Pialla a mano	
Trapano a mano	

Lista materiale	Mat.	pz.	Lung.	Larg.	Spes.
Pannello	MDF	1	688	679.3	19
Ferramenta					
d'assemblaggio DOPLEX	4		86.011.01		
Viti	16		3.0 x 16		
Viti	20		4.0 x 16		



A-A

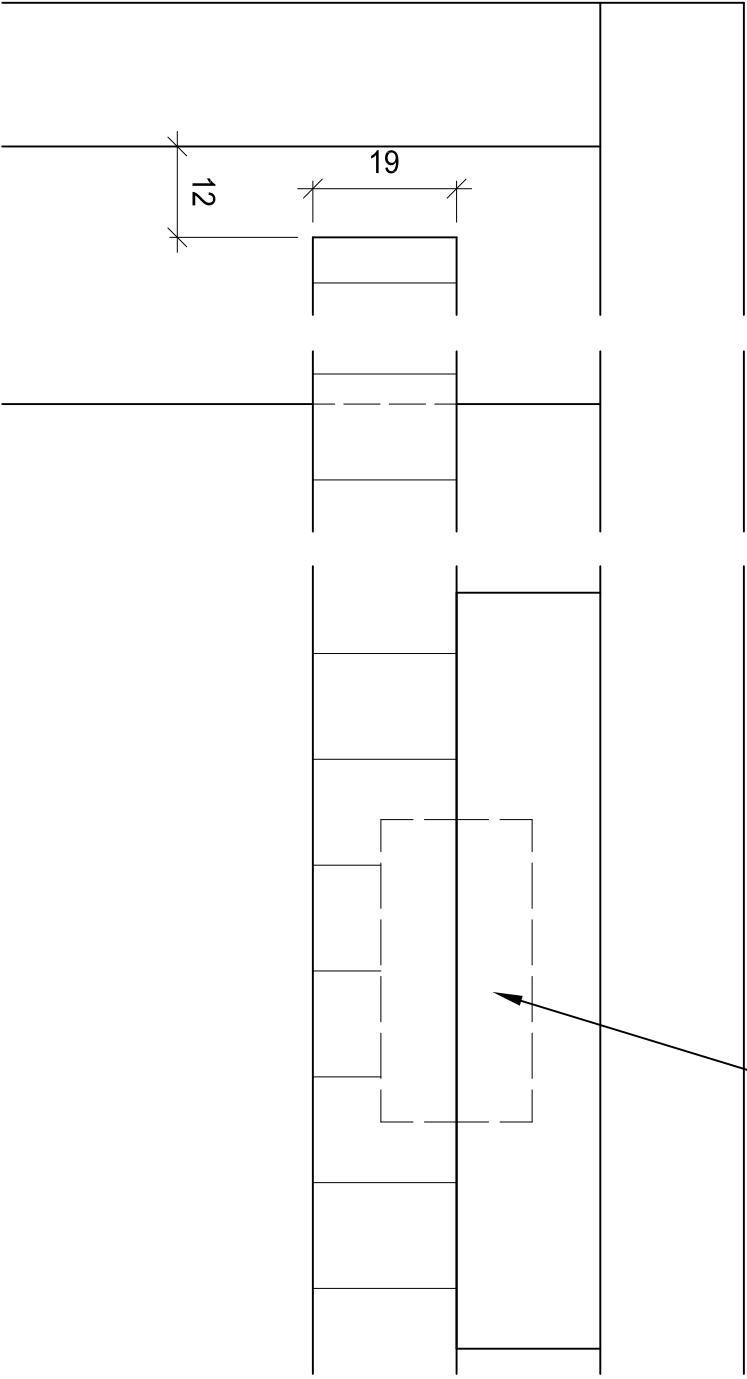


A-A

A-A

A-A

Ferramenta d'assemblaggio DOPLEX
fissata nella dima



2

il falegname

l'uomo che fa

www.luomochefai.ch

Lavoro pratico

Esame fondamentale di base
6.Semestre

Associazione Svizzera Fabbricanti Mobili
e Serramenti

No. lavoro: 13a-P.2

Scala: 1:10 / 1:1

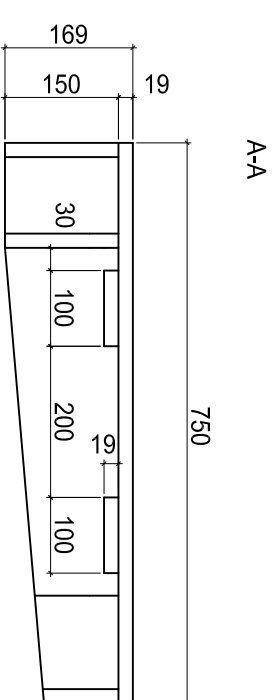
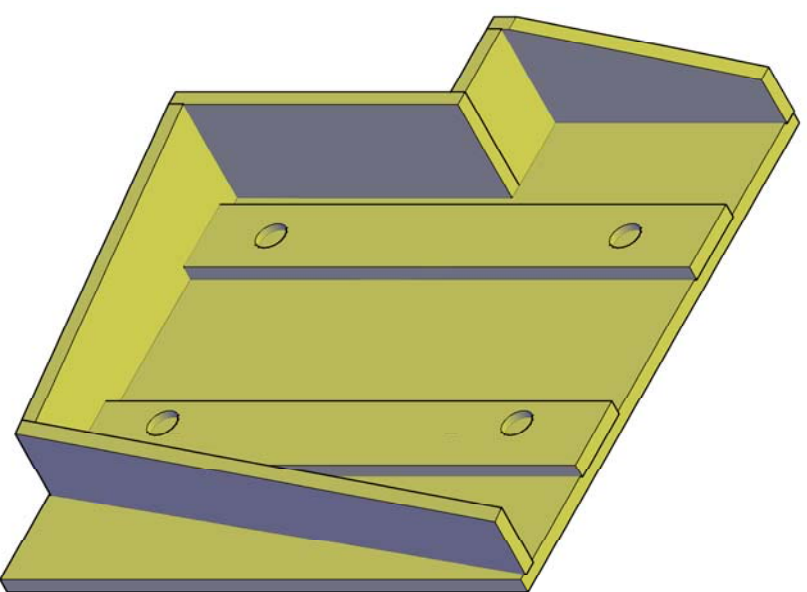
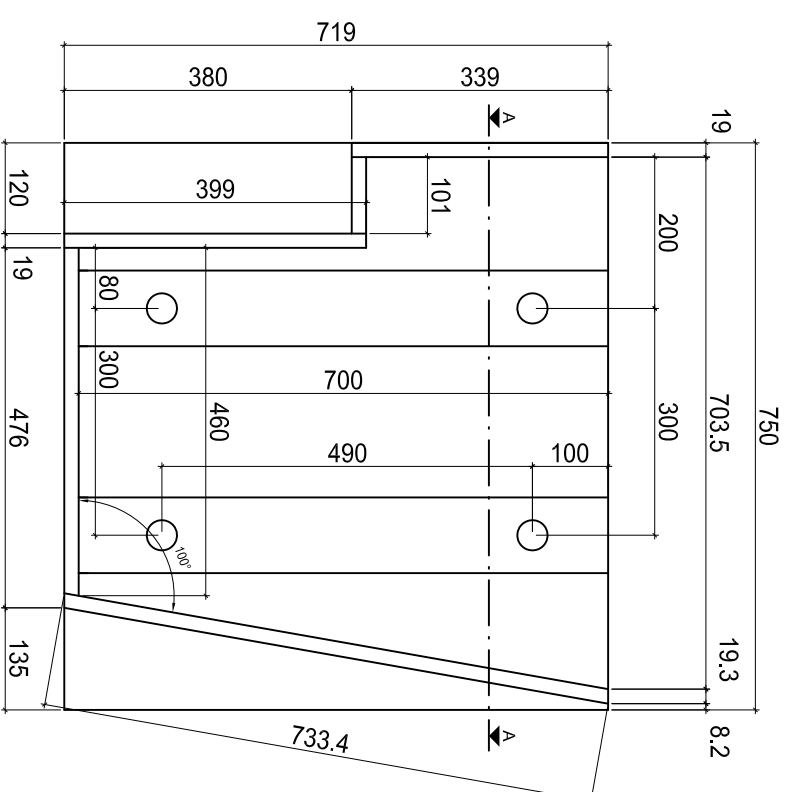
Dim. Foglio: 420 x 297

Data: 11.03.2013

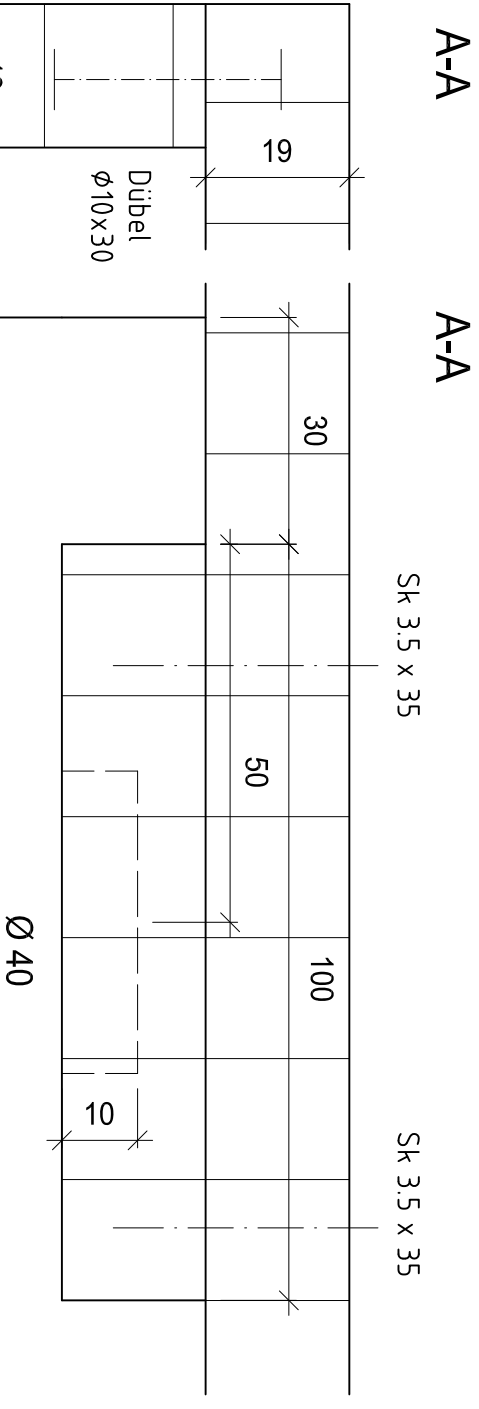
Disegnatore ls

Schablonenbau

Werkstoffliste	Mat.	Stk.	Länge	Breite	Dicke
Boden	MDF	1	<u>719</u>	<u>750</u>	19
Seitenteil	MDF	1	<u>339</u>	<u>150</u>	19
Seitenteil	MDF	1	101	150	19
Seitenteil	MDF	1	399	150	19
Seitenteil	MDF	1	460	150	19
Seitenteil	MDF	1	<u>733,4</u>	150	19
Distanzhalter	MDF	2	<u>700</u>	100	19
DOPLEX-Verbinder rot		4	86,011.01		
Schrauben			PH verz. 3.0 x 16		
Schrauben			Sk verz. 4.0 x 16		



Nur für die interne Schablonenherstellung



2

Praktische Arbeiten

Grundlegende Berufsarbeiten (Teilprüfung) 6. Semester

Verband Schweizerischer Schreinermeister und Möbelfabrikanten

Aufgaben-Nr.: 13a-P.2 - P

Massstab: 1:10 / 1:1

Plangröße: 420 x 297

Datum: 11.03.2013

Gezeichnet: Is

Der Schreiner
Ihr Macher
schreiner.ch

schreiner.ch

Collegamento ad angolo: spinare, mortasare

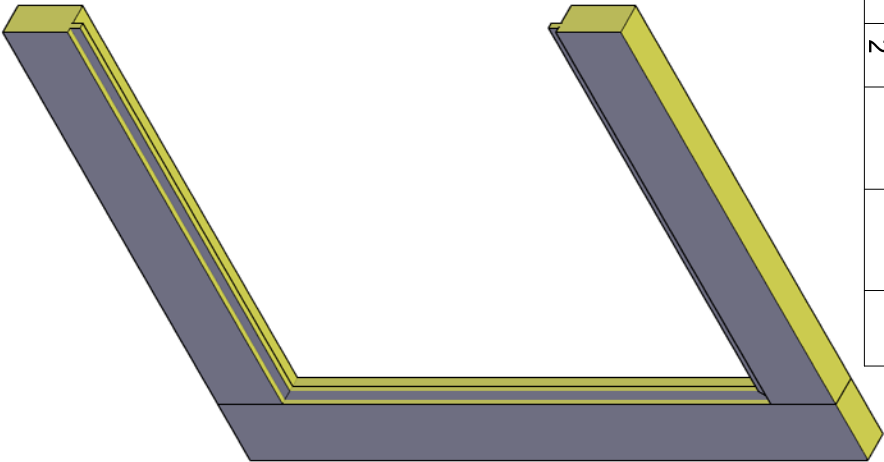
Lavoro con macchine stazionarie

Cavatrice a punta
Cavatrice a catena
Segomatrice A (TOUPIE)

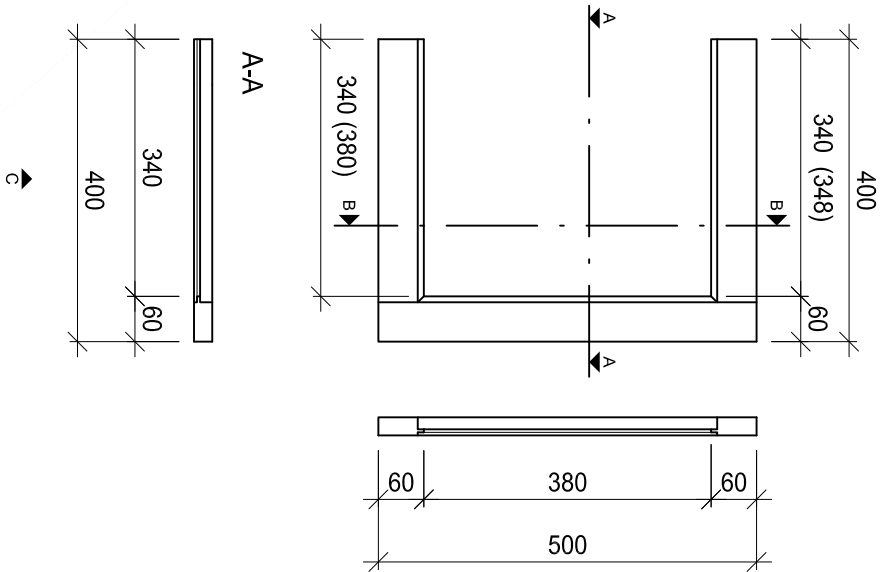
Lavoro

Banco	Tracciare (senza controllo)
Banco	Taglio angaletto
Cavatrice a punta	Esecuzione della cava
Cavatrice a punta	Esecuzione fori spine
Segomatrice A (TOUPIE)	Tenone, battute e profilo
Banco	Assemblaggio
	Non Pulire
	Non Incollare

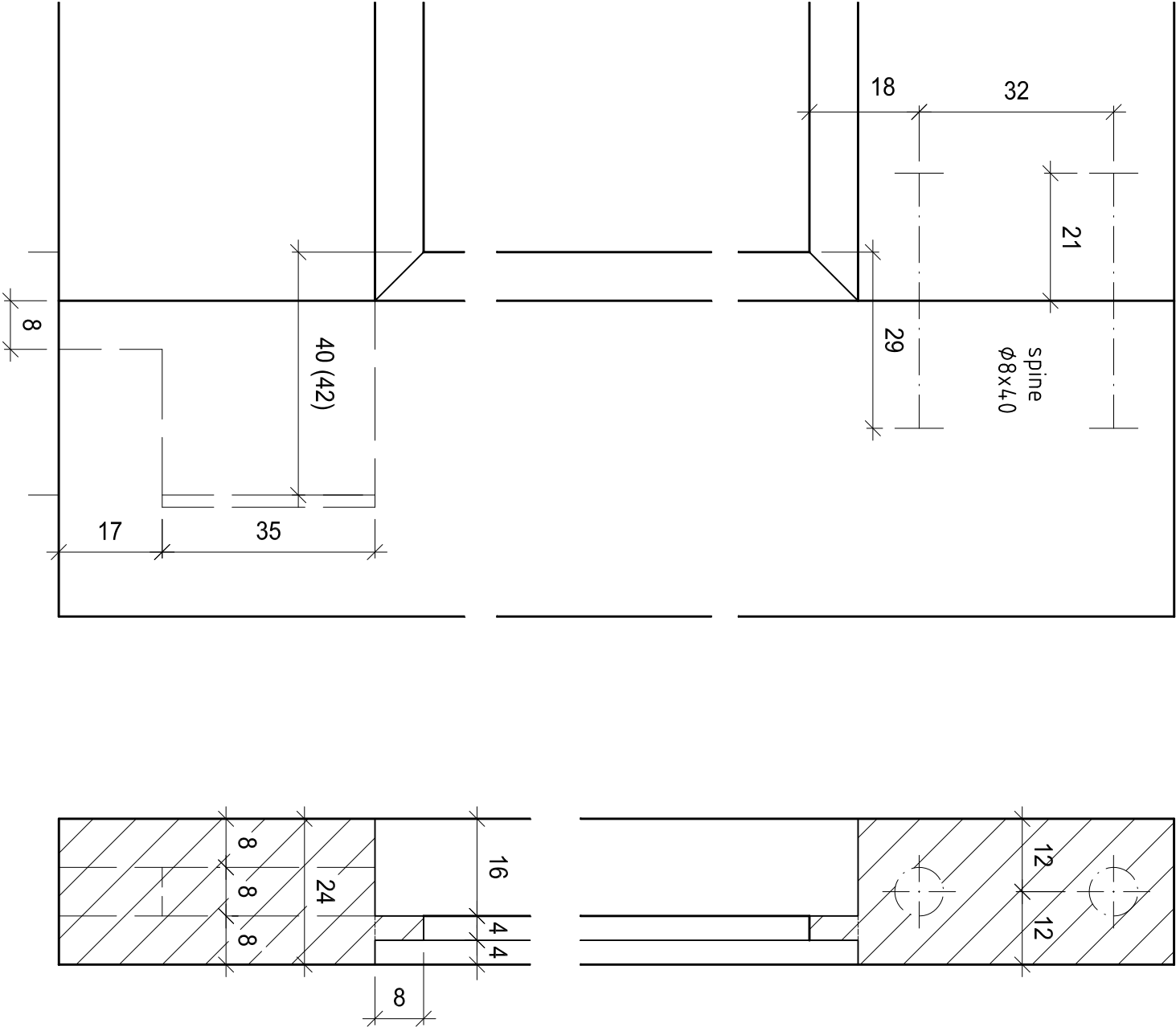
Lista materiale	Mat.	Pz.	Lung.	Larg.	spes.
Montante	C	1	500	60	24
Traverso sopra	C	1	348	60	24
Traverso sotto	C	1	380	60	24
Pezzi di prova	C	2	400	60	24
Spine Ø8 x 40		2			



Vista C



B-B



Lavoro pratico

Esame fondamentale di base
6.Semestre

Associazione Svizzera Fabbricanti Mobili
e Serramenti

3

il falegname

l'uomo che fa

www.liumochefa.ch

Armadio con anta

Lavoro con macchine stazionarie

- Cavatrice a punta
- Trapano a colonna

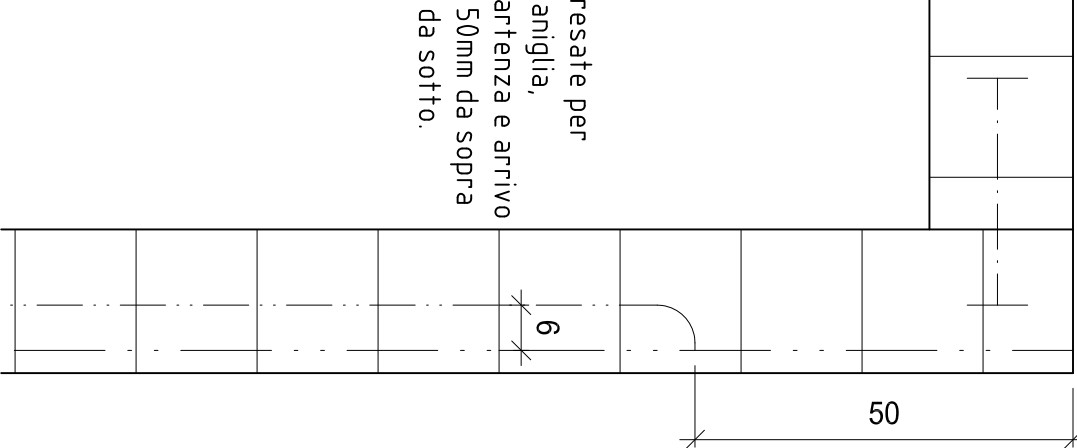
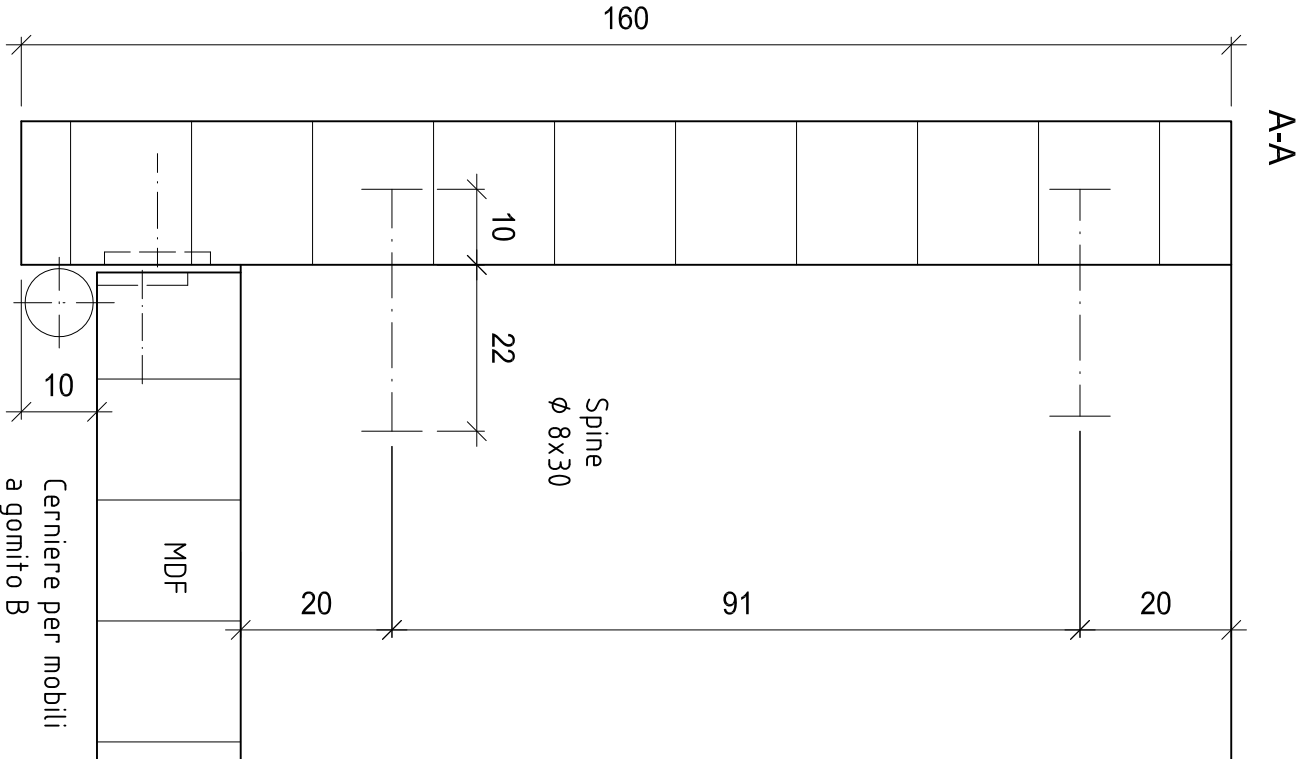
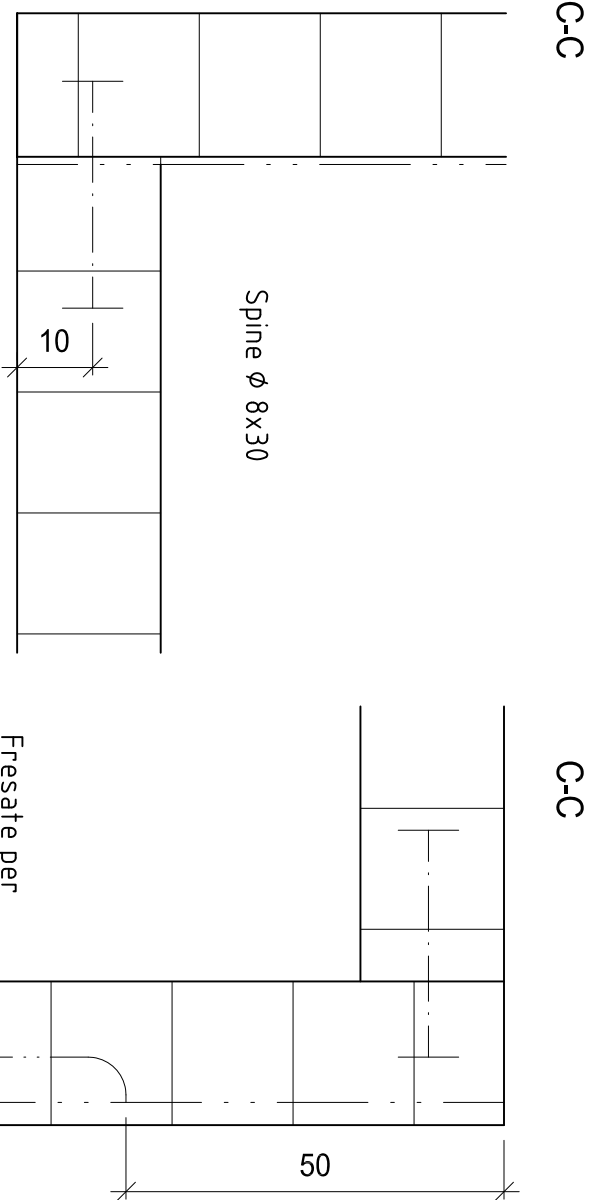
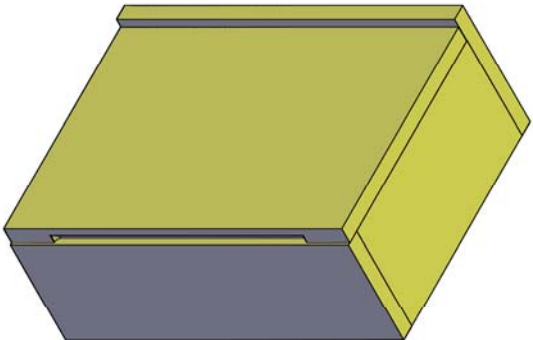
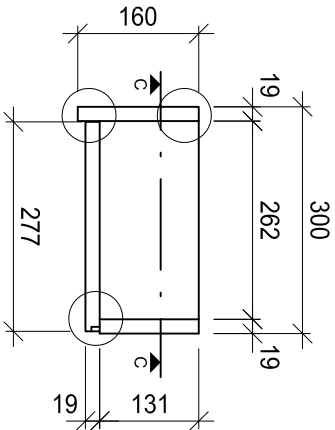
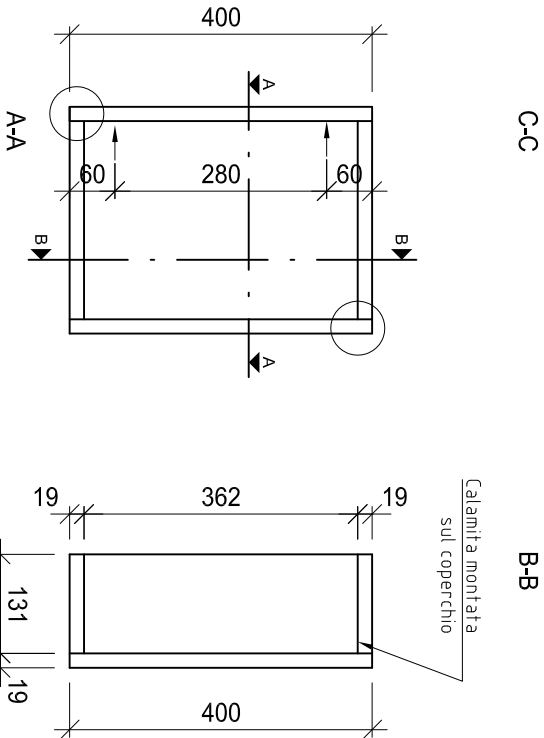
Lavoro con macchine portatili

- Pantografo a mano (Oberfäse)

Lavori

- Cavatrice a puntaForare
- Trapano a colonnaForare
- Pantografo a mano (Oberfäse)Incassare cerniere per mobili
- Fresata maniglia
- BancoMontaggio della ferramenta
- Assemblaggio e controllo misure
- Rompere gli spigoli
- Incollare (Prima mostrare agli esperti)
- Non pulire la superficie

Lista materiale	Mat.	Pz.	Lung.	Larg.	Spes.
Spalla sinistra	MDF	1	400	160	19
Spalla destra	MDF	1	400	131	19
Fondo e Coperchio	MDF	2	262	131	19
Anta	MDF	1	400	277	19
Calamita		1	48.059.01		
Viti		4	v.g.s zincate 3.0 x 16		
Cerniere Kröpfung B sinistra		2	99.100.98		
Viti		12	v.p. INOX 3.0 x 16		
Spine Ø8 x 30		8			



4

il falegname

l'uomo che fa

www.liumochefact

Lavoro pratico

Esame fondamentale di base

6.Semestre

Associazione Svizzera Fabbricanti Mobili e Serramenti

No. lavoro:

Scala:

Dim. Foglio:

Data:

Disegnatore

13a-P.4

1:10 / 1:1

420 x 297

11.03.2013

ls

Fresata per maniglia a seconda della fresa disponibile

Lavoro con legno massiccio

Lavoro con macchine stazionarie

Pialla a filo	
Pialla a spessore	

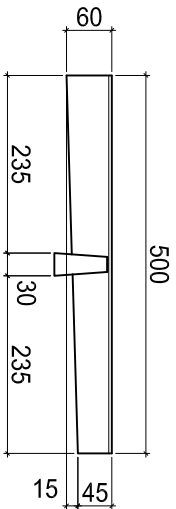
Lavoro con macchine portatili
sega circolare per tagli obliqui (taglia angaletti)

Lavoro

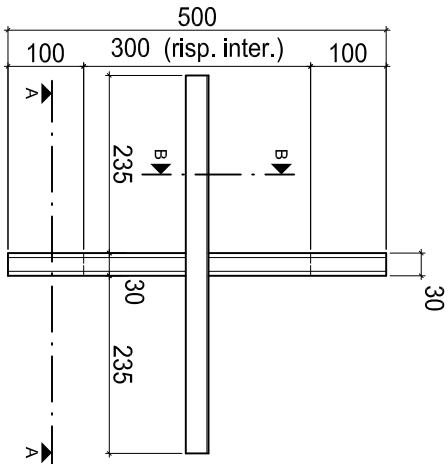
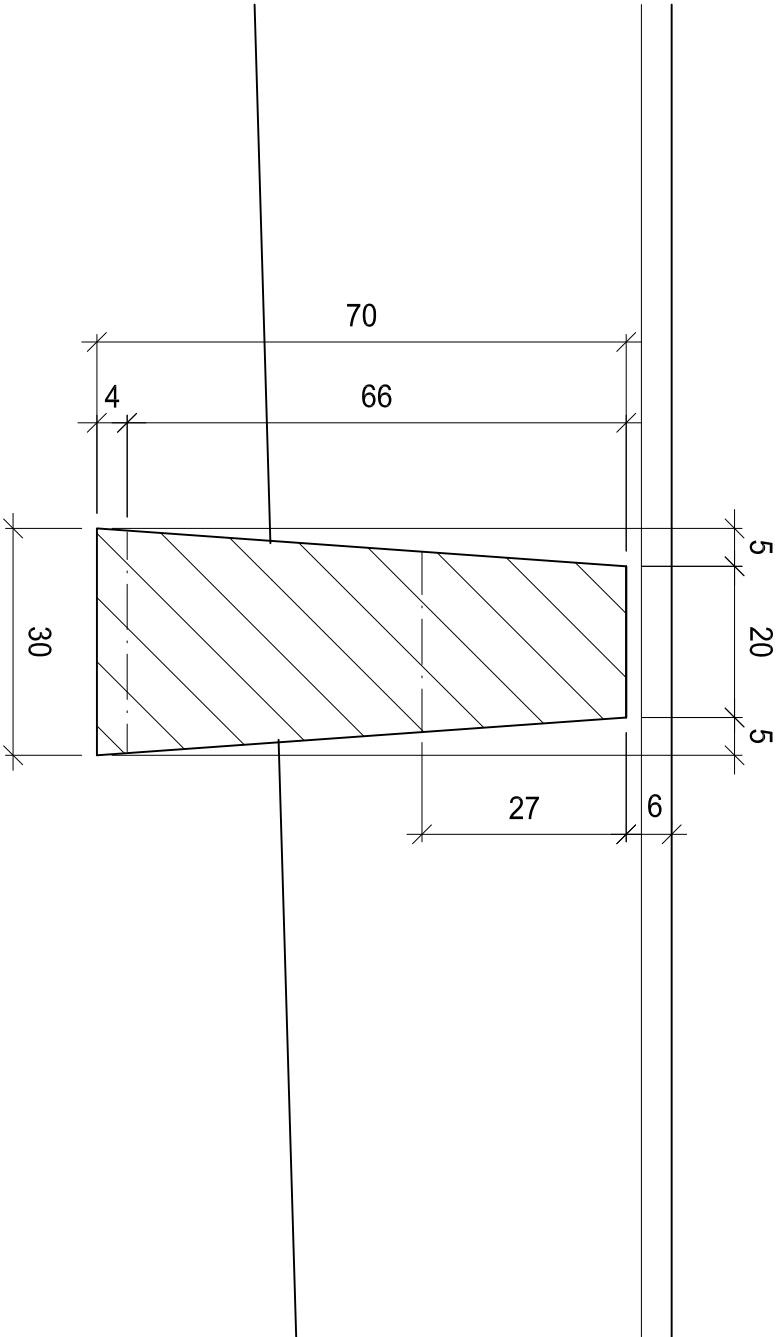
Pialla a filo	Piallare i traversi
Pialla a spessore	Piallare in dimensione
Banco	Tracciare (senza controllo)
Pialla a filo	Lavorare i traversi
Taglia angaletti	Esecuzione della piallatura interrotta
Banco	Adattamento giunzione
	Non pulire
	Non incollare

Lista materiale	Mat.	Pz.	Lung.	Larg.	spes.
Elemento inferiore	C	1	500	70	30
Elemento superiore	C	1	500	60	30

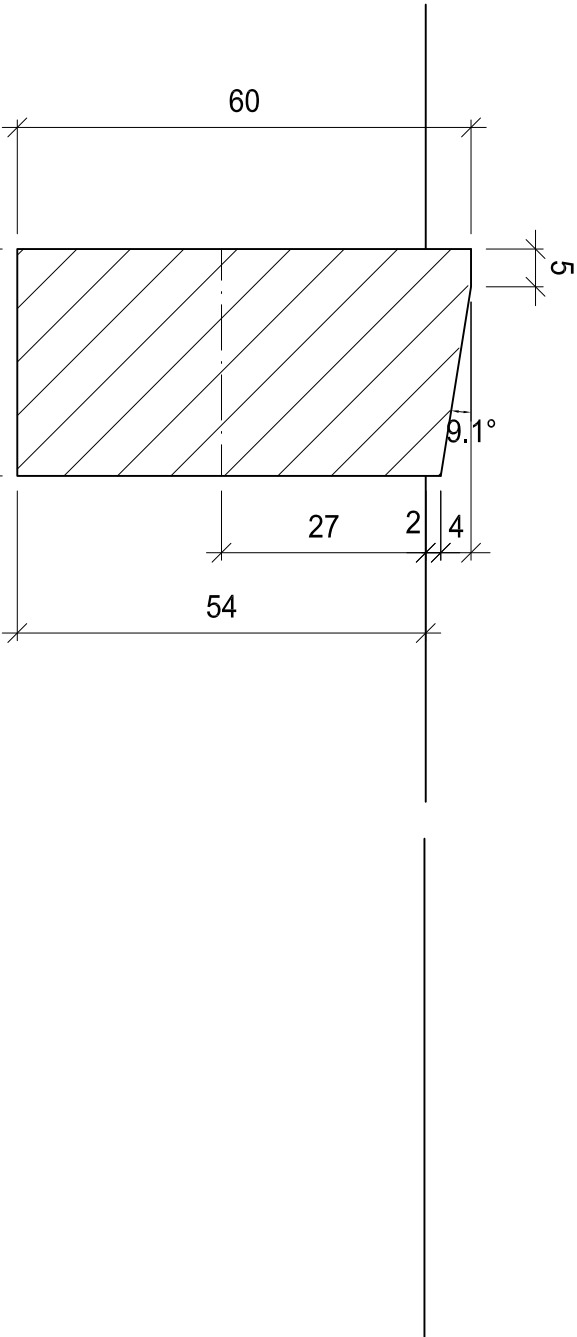
A-A



A-A



B-B



5

il falegname

l'uomo che fa

www.luomochefai.ch

Lavoro pratico

Esame fondamentale di base
6.Semestre

Associazione Svizzera Fabbricanti Mobili
e Serramenti

No. lavoro: 13a-P.5

Scala: 1:10 / 1:1

Dim. Foglio: 420 x 297

Data: 11.03.2013

Disegnatore ls

100 S/D

Giunzione legno massiccio di testa

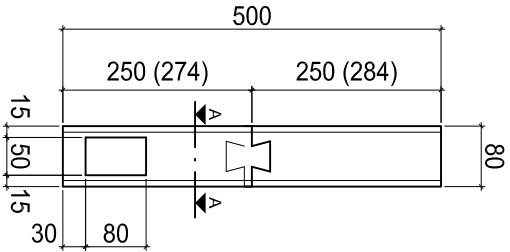
Lavori al banco
Sega giapponese
Pialla a mano

Lavori con macchine portatili
Pantografo a mano

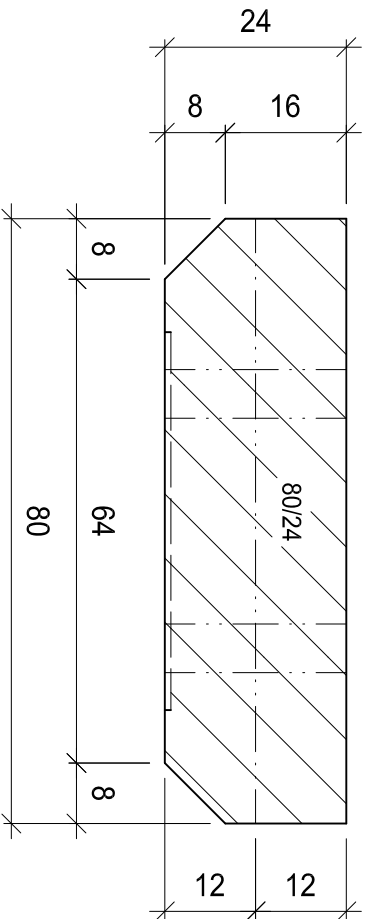
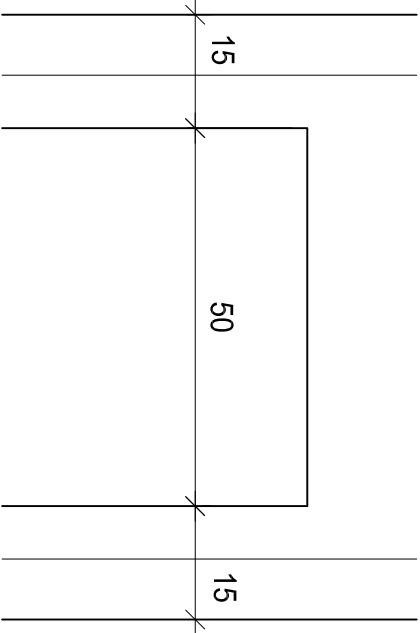
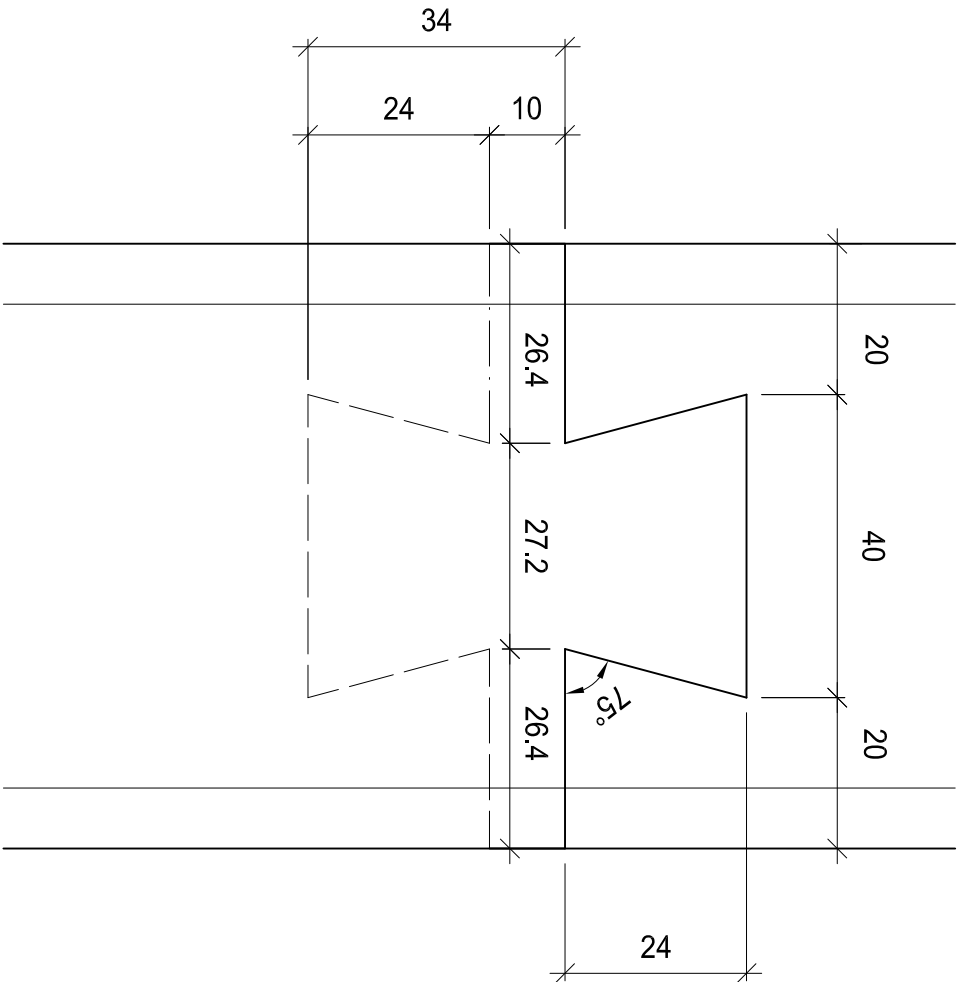
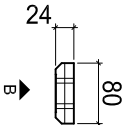
Lavori	Tracciatura (senza controllo)
Banco	Code di rondine
Pantografo a mano	Lavorazione delle code di rondine
Banco	Profilo con pialla a mano
Pantografo a mano	Incassare laminato
	Non incollare
	Non pulire

Lista materiale	Mat.	Pz.	Lung.	Larg.	spes.
Montante	C	1	274	80	24
Montante	C	1	284	80	24
Rivestimento	Lam.	1	80	50	ca. 1

Vista B



A-A



6

il falegname

l'uomo che fa

www.luomochefra.ch

Lavoro pratico

Esame fondamentale di base

6.Semestre

Associazione Svizzera Fabbricanti Mobili e Serramenti

No. lavoro:

Scala:

Dim. Foglio:

Data:

Disegnatore

13a-P.6

1:10 / 1:1

420 x 297

11.03.2013

ls

Lavoro con la sega circolare da tavola

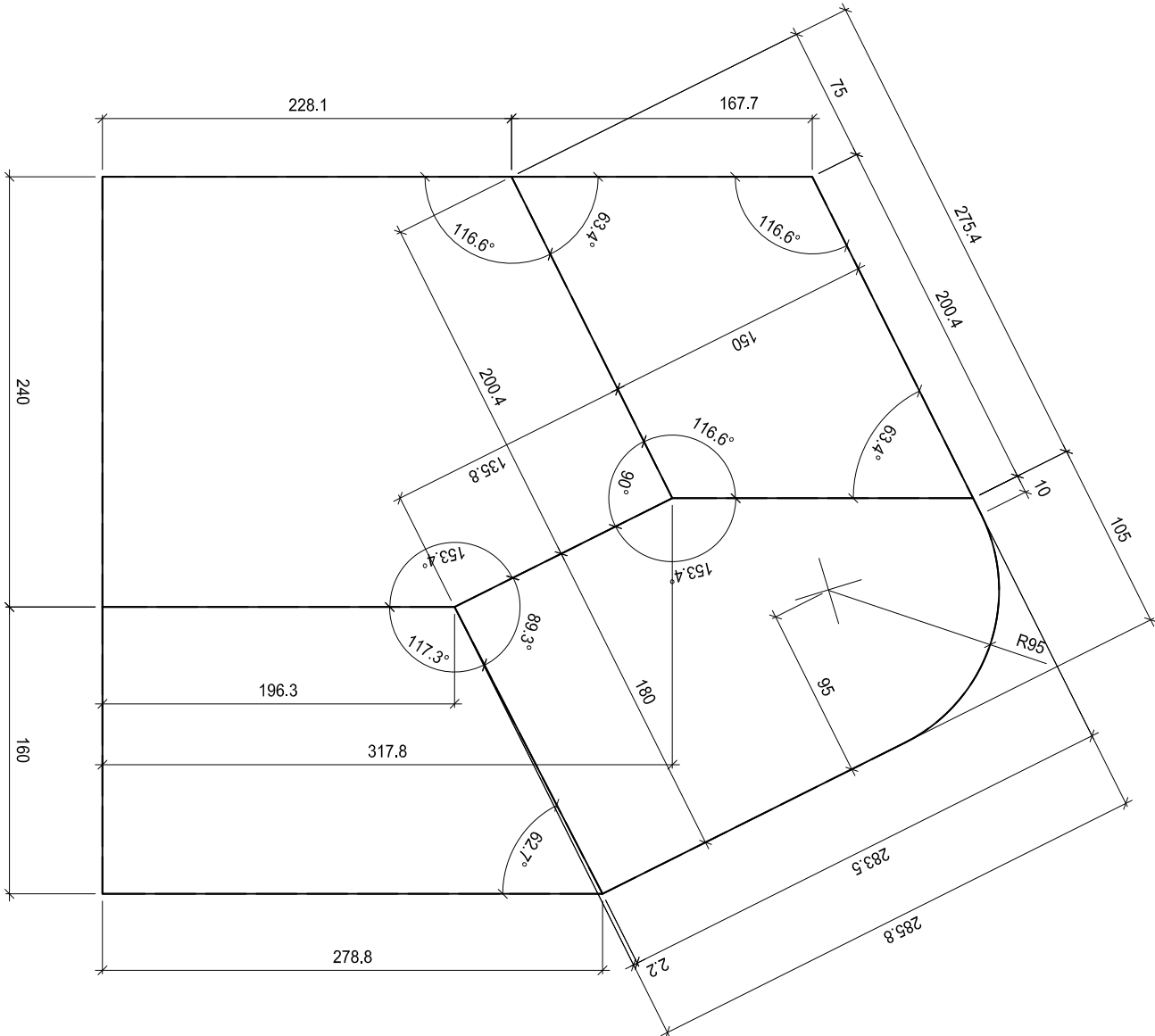
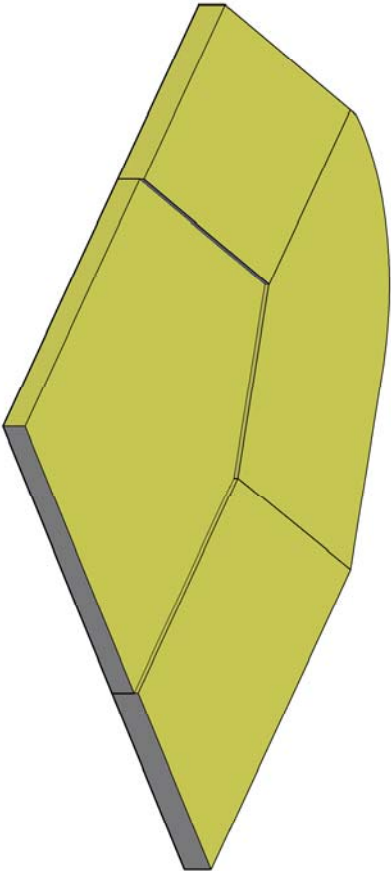
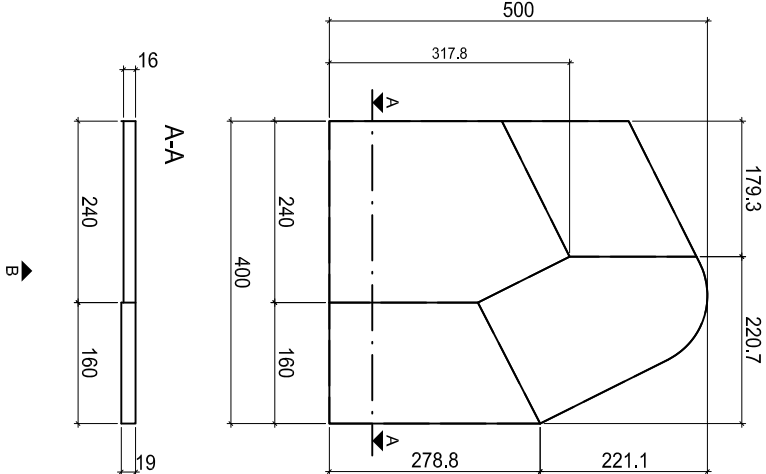
Vista B

Lavoro con macchine stazionarie
Sega circolare A
Levigatrice per bordi

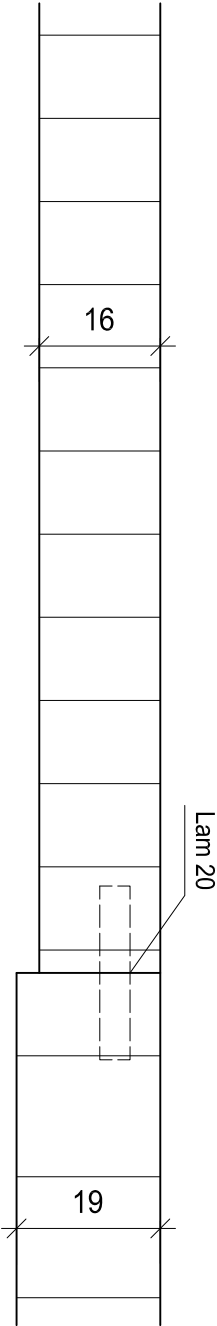
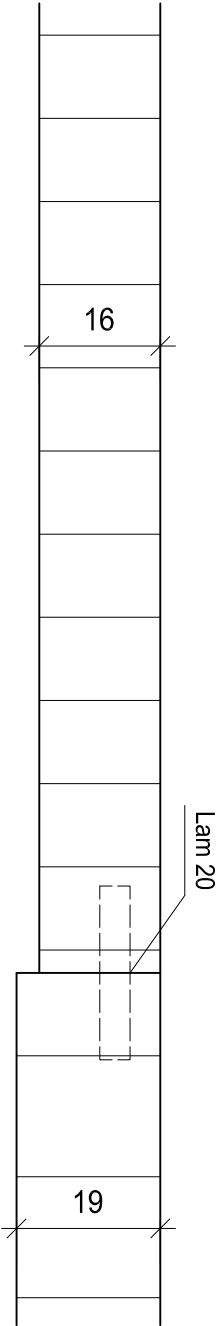
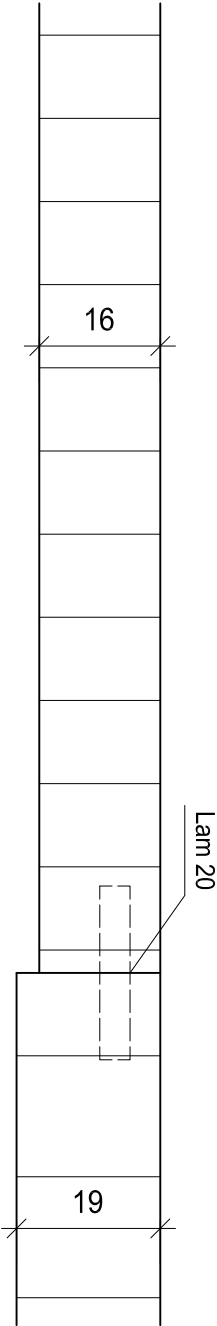
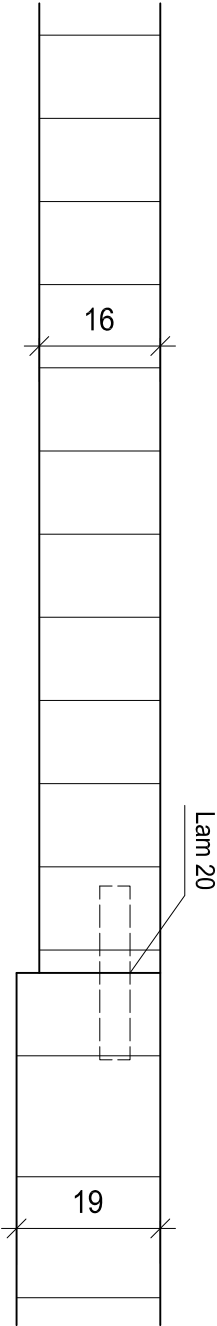
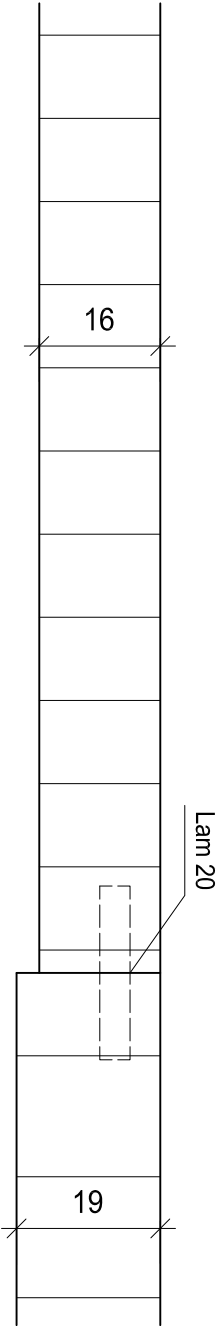
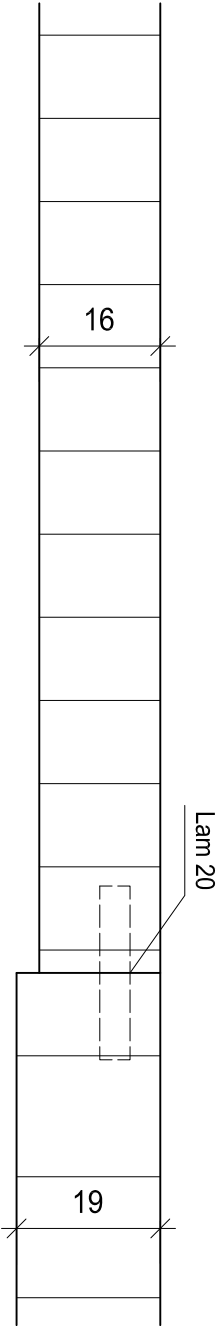
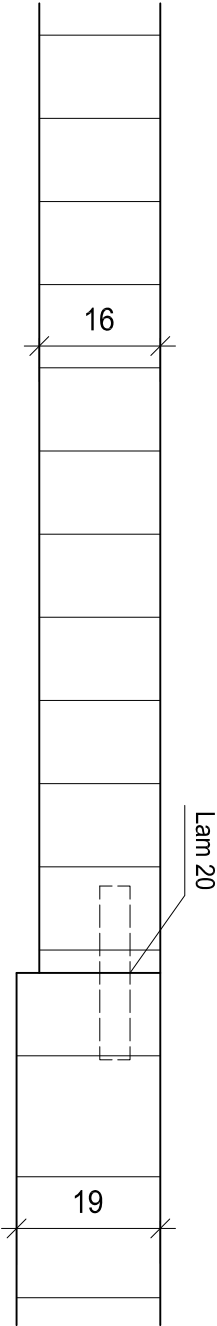
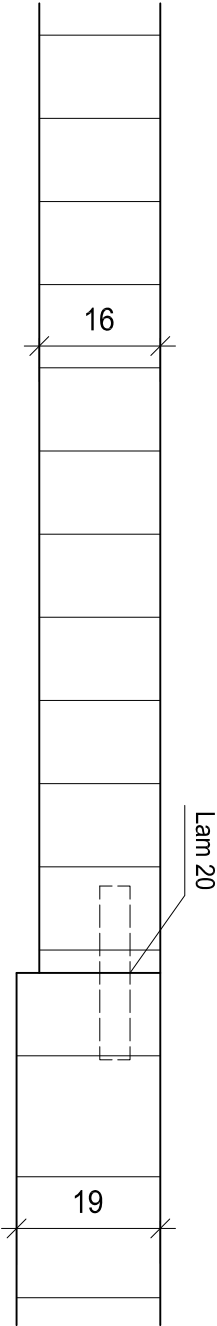
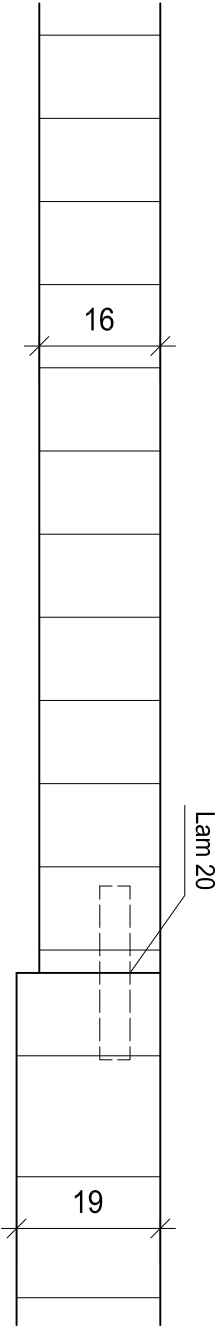
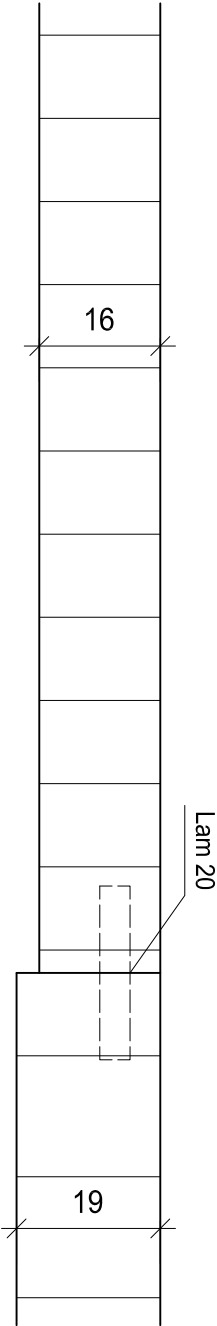
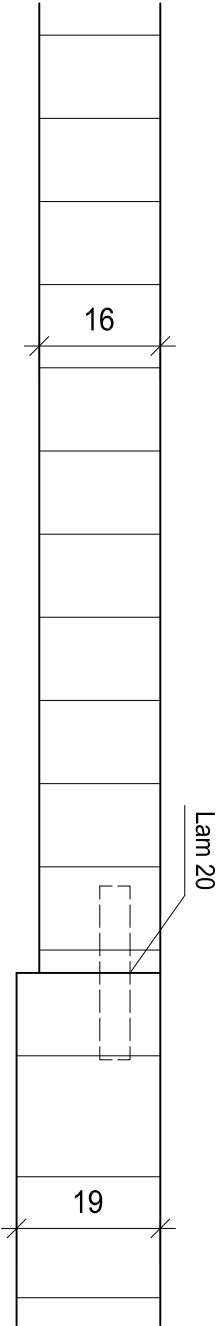
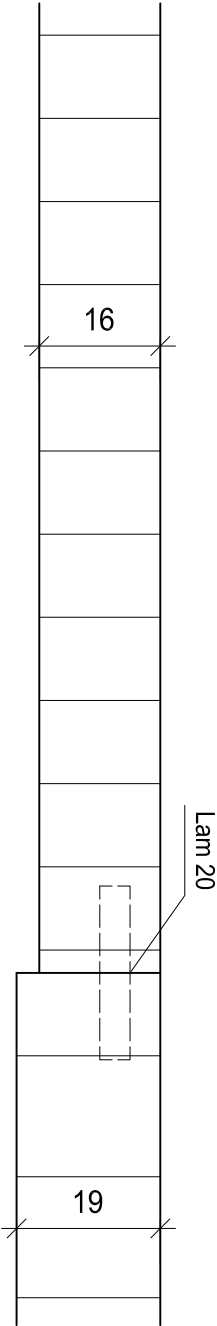
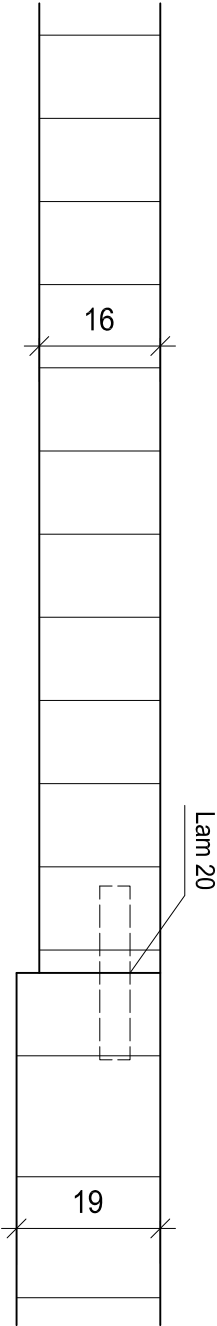
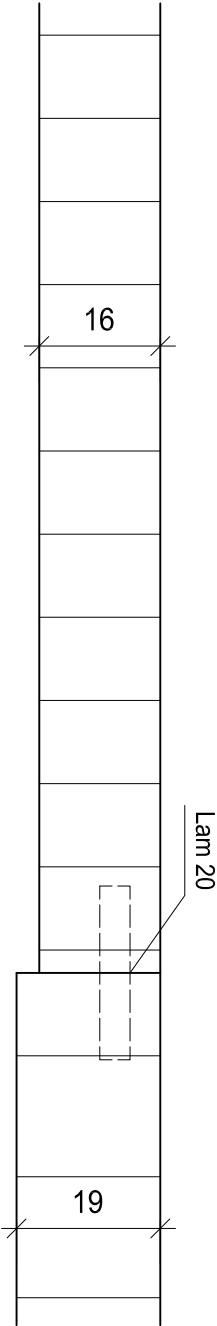
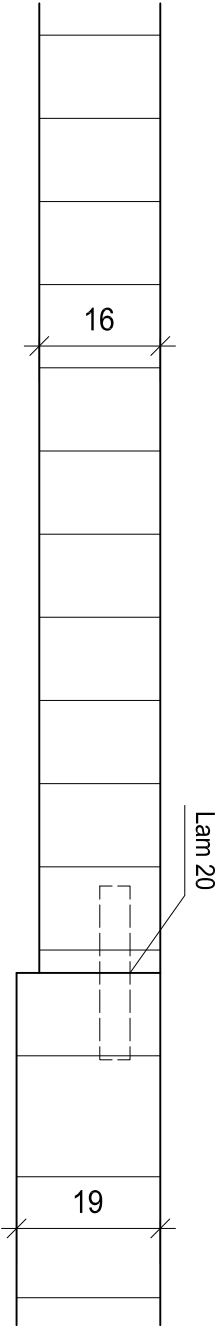
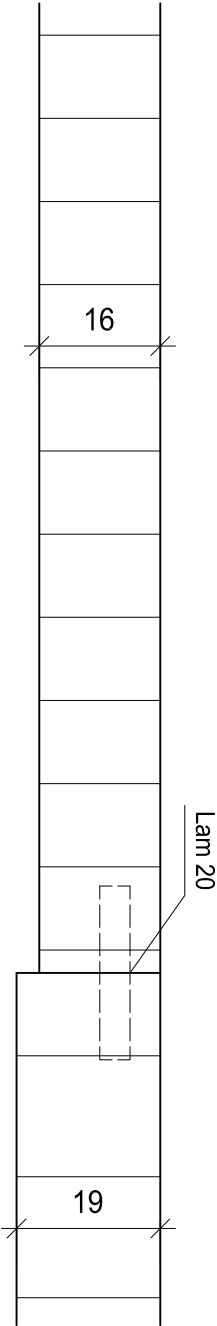
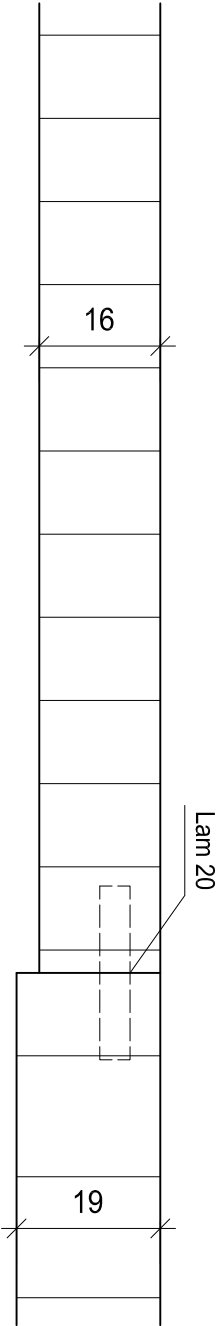
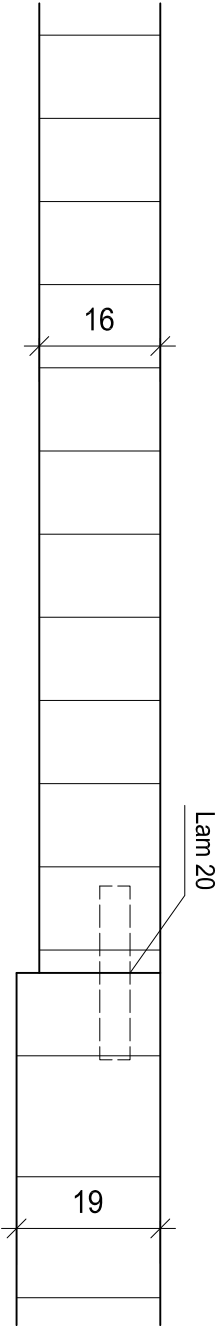
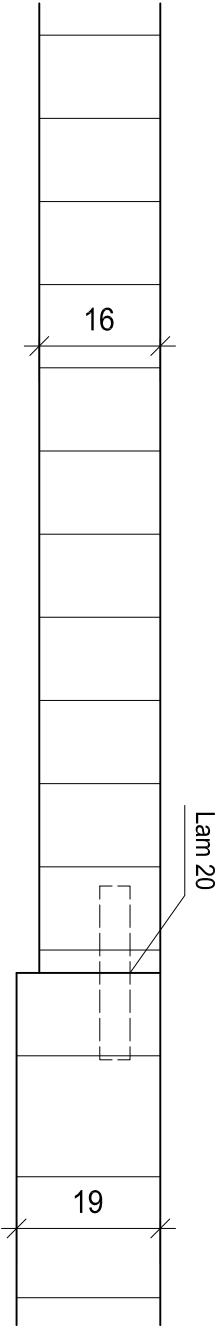
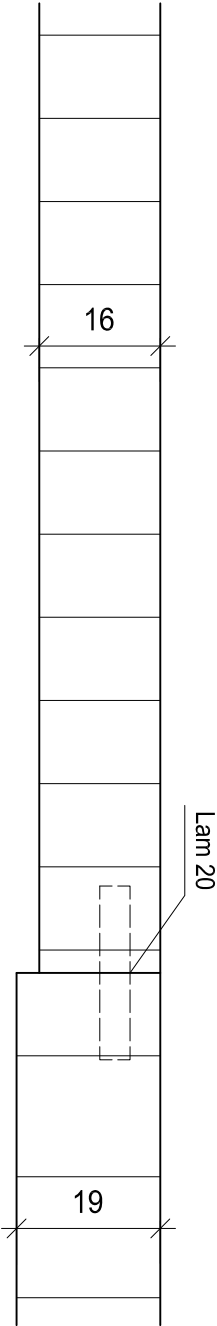
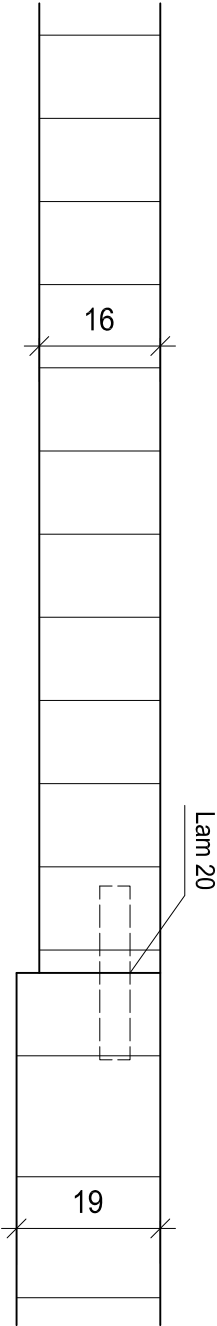
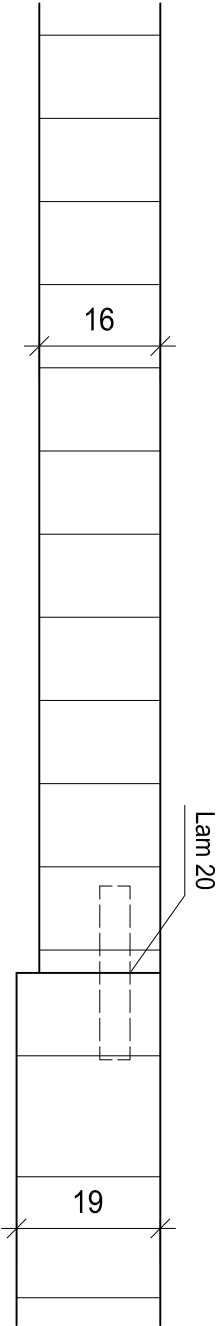
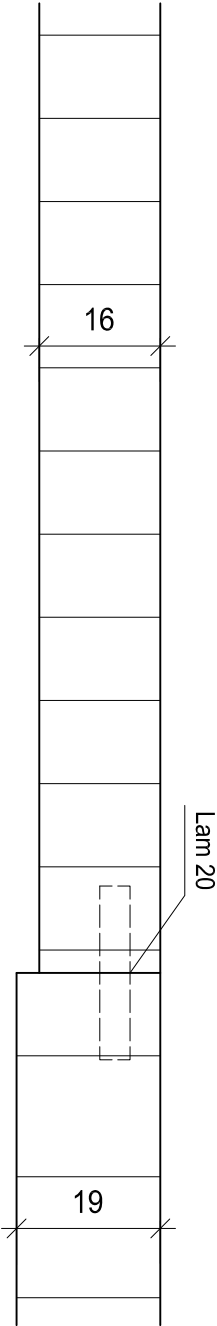
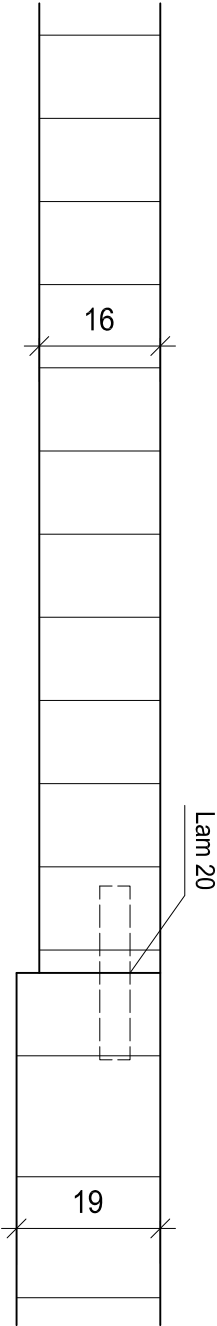
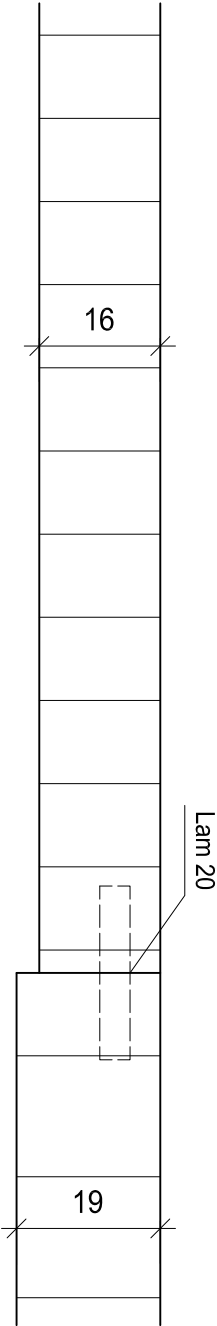
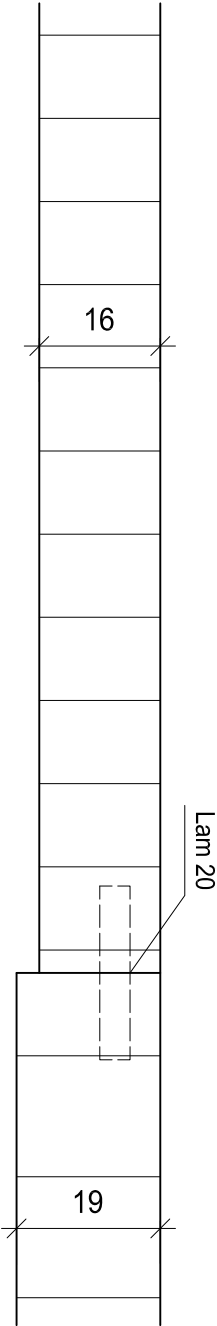
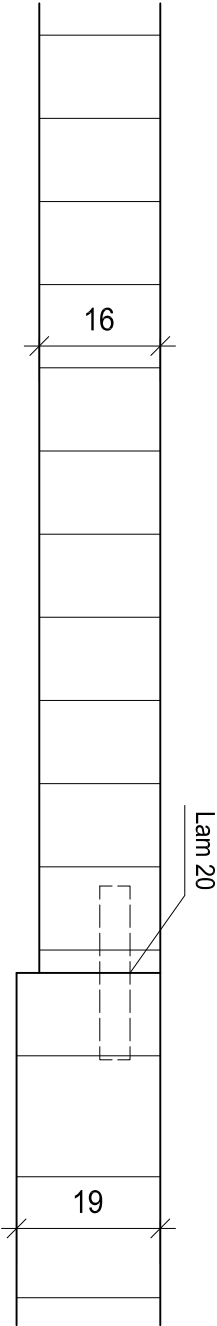
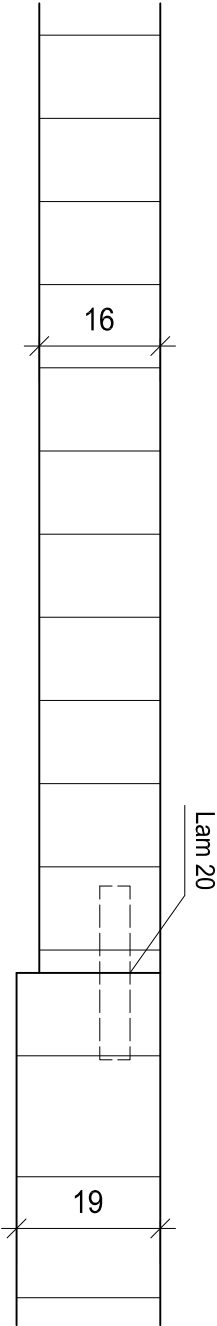
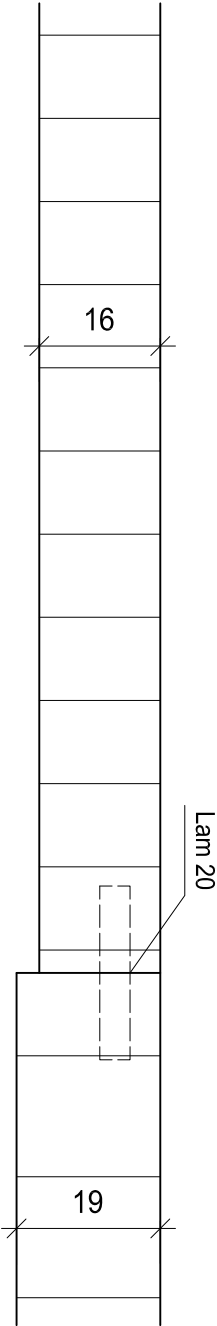
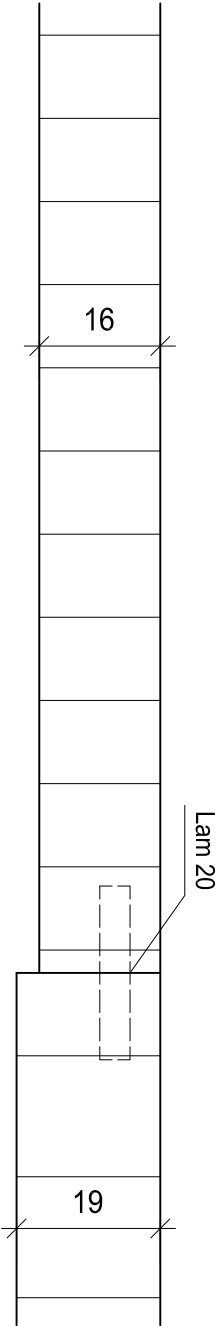
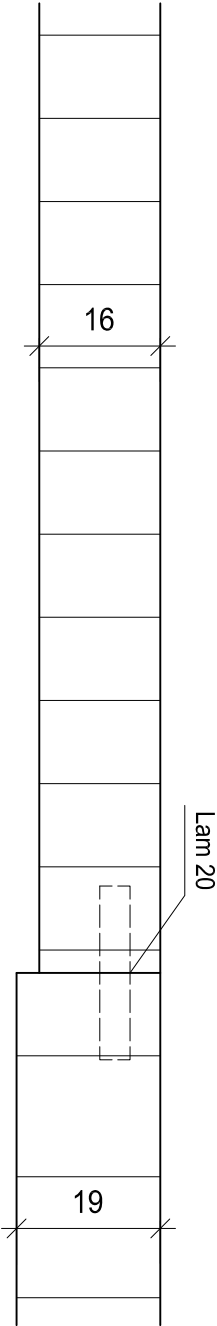
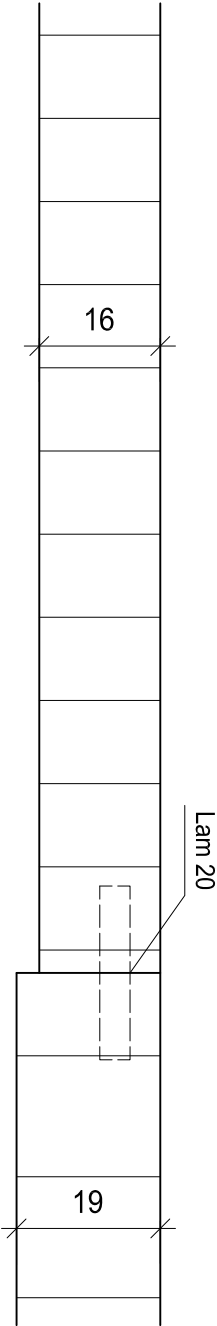
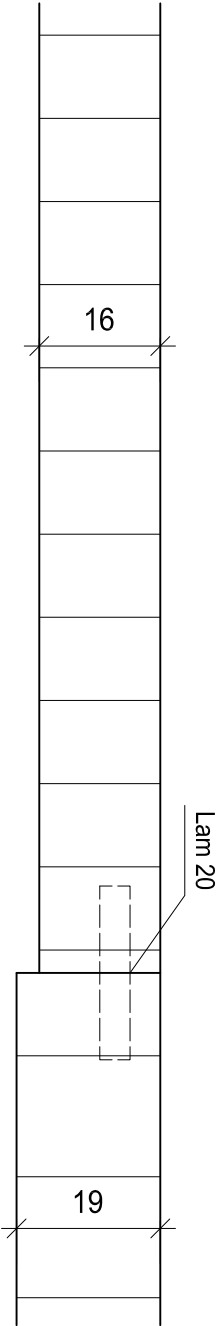
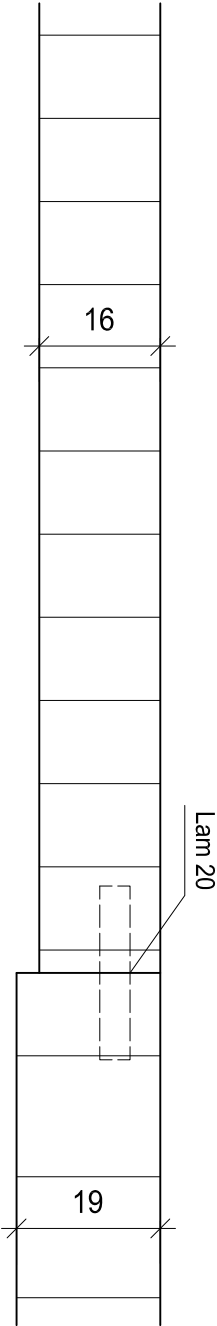
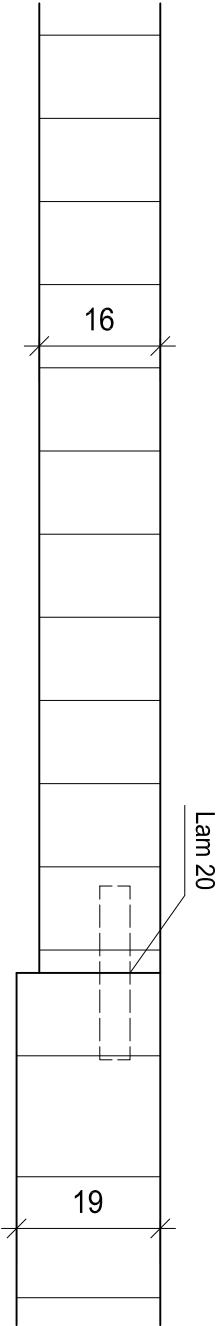
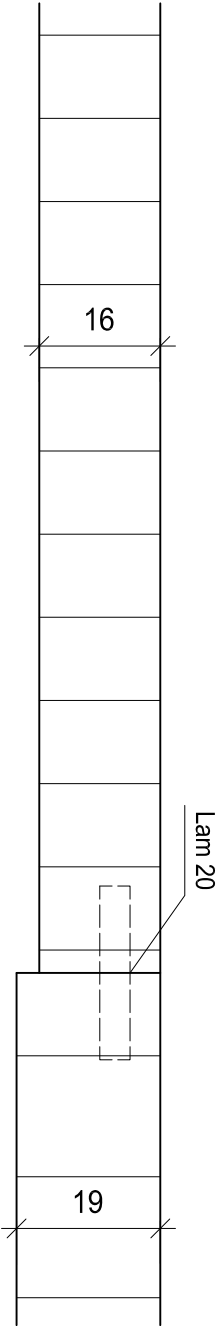
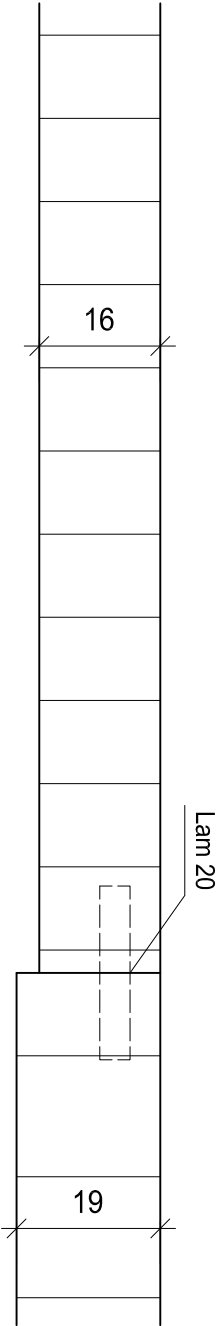
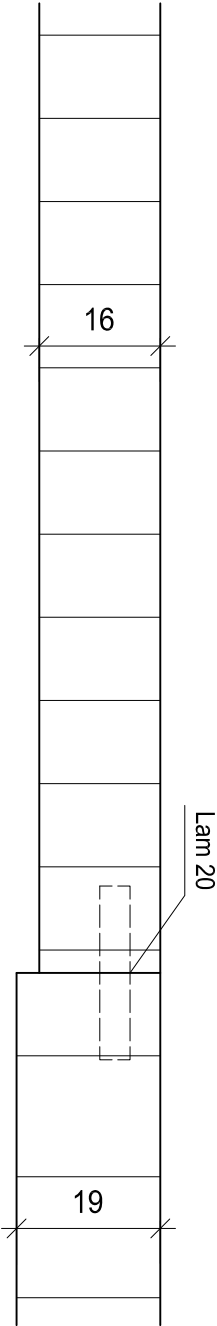
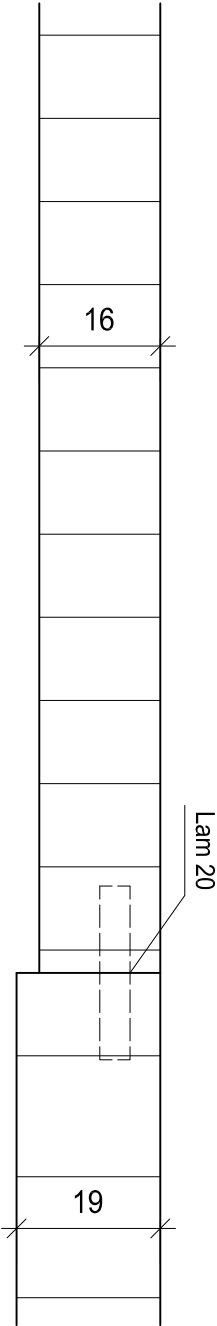
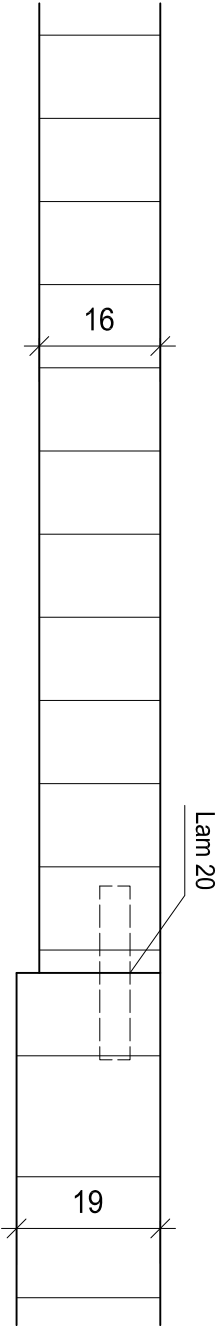
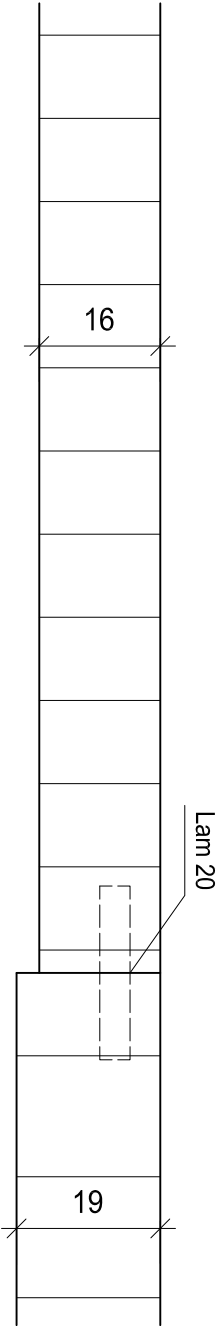
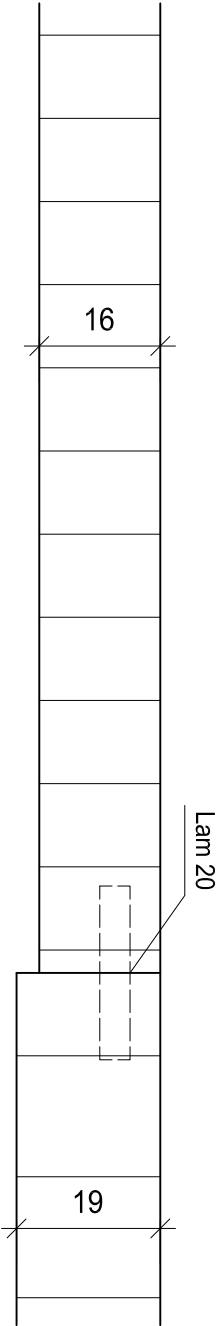
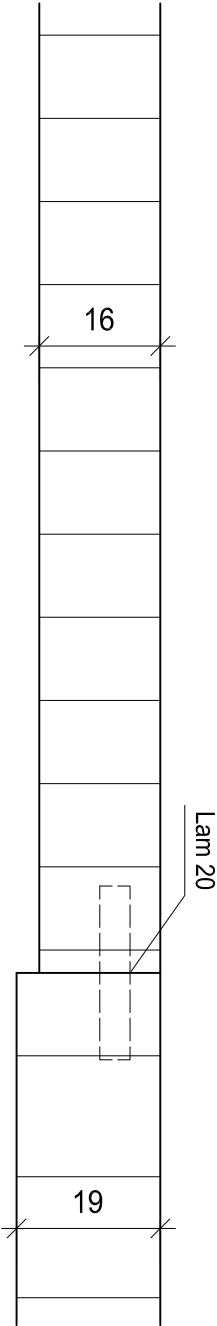
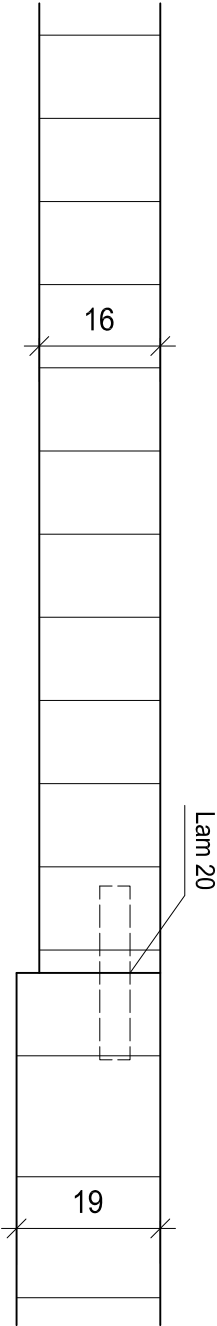
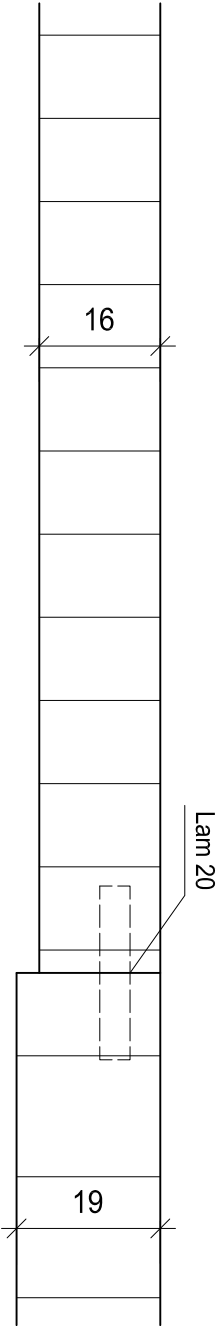
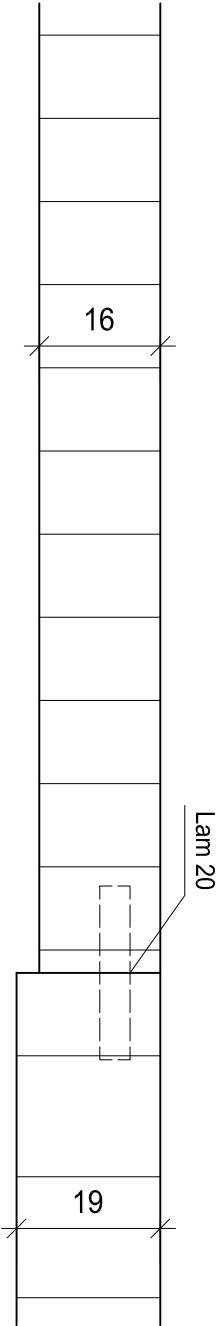
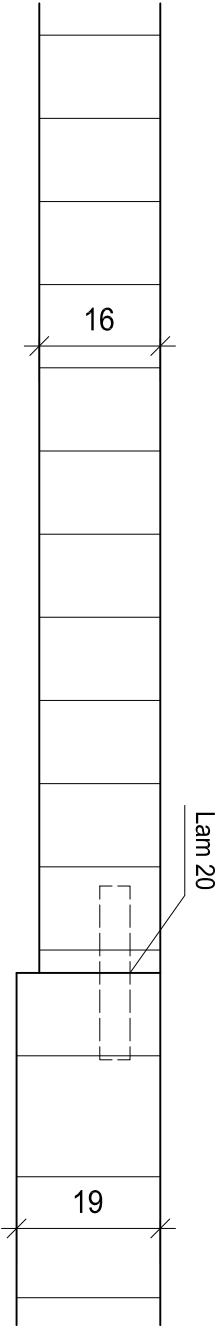
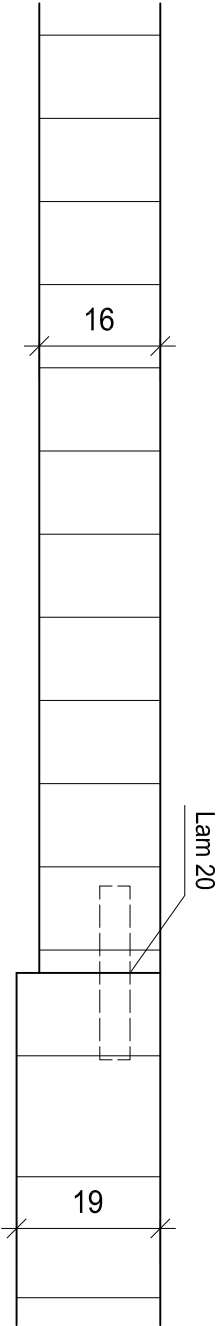
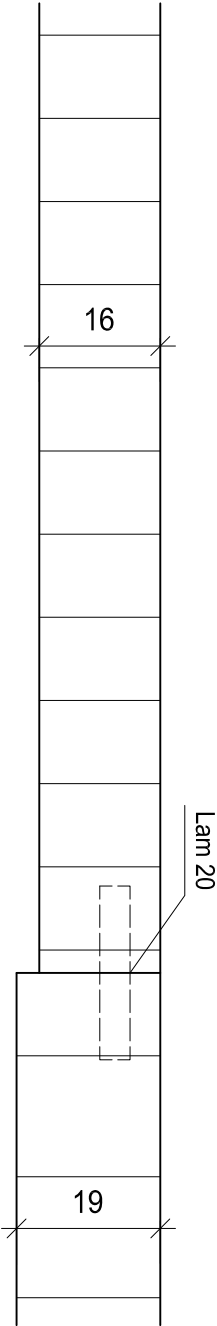
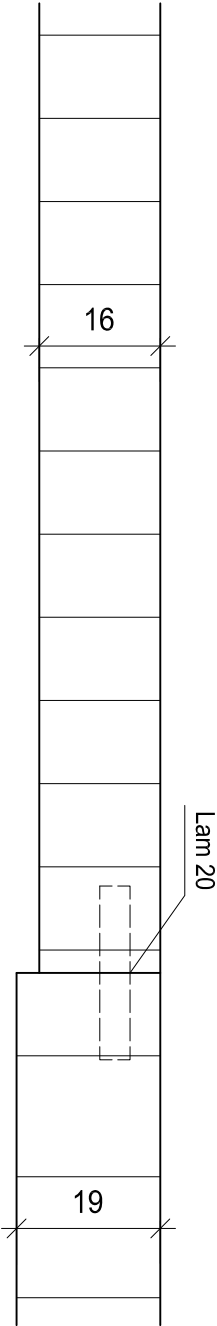
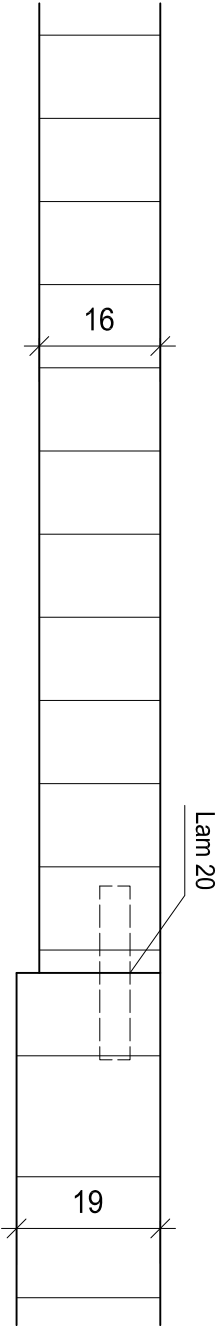
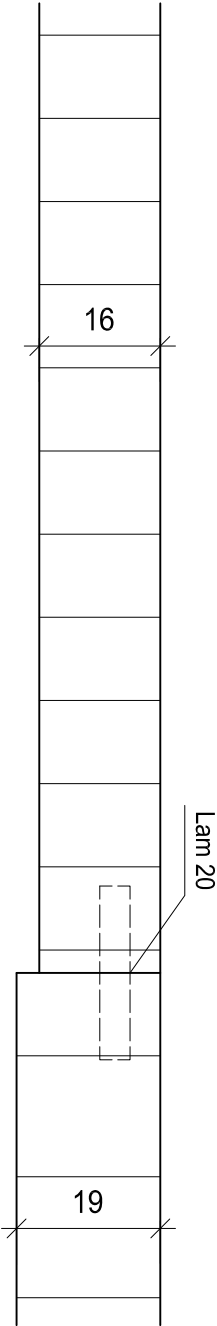
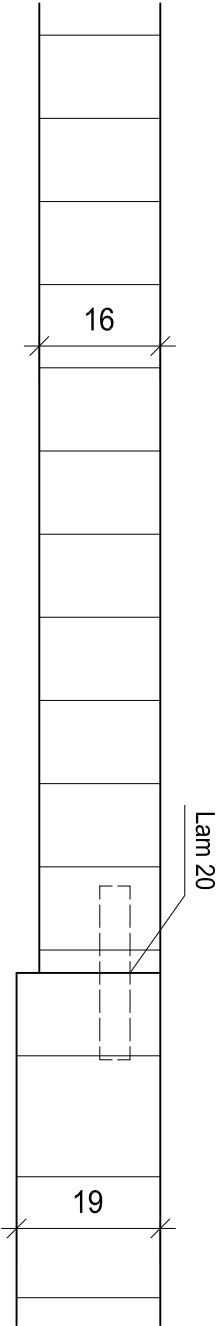
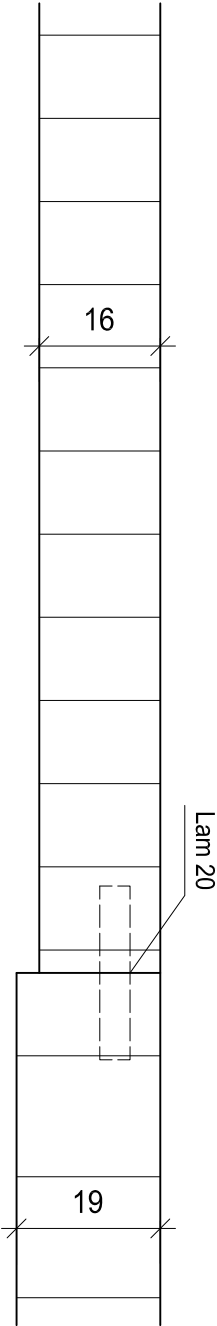
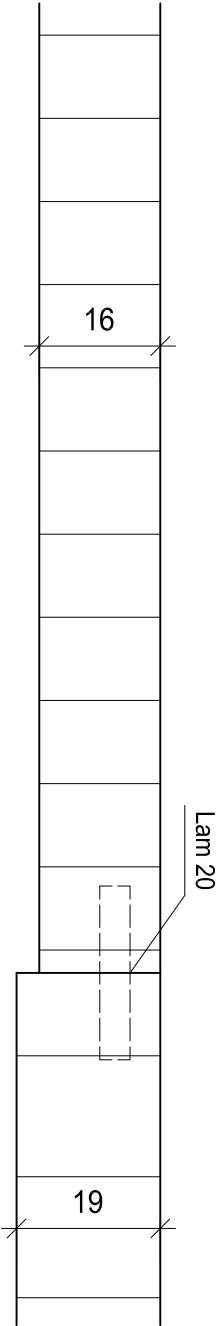
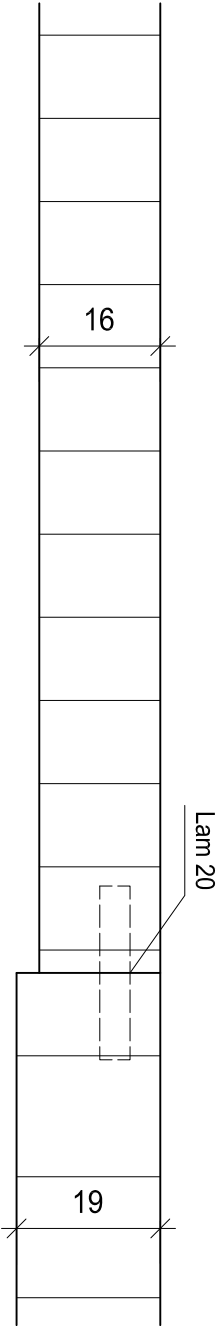
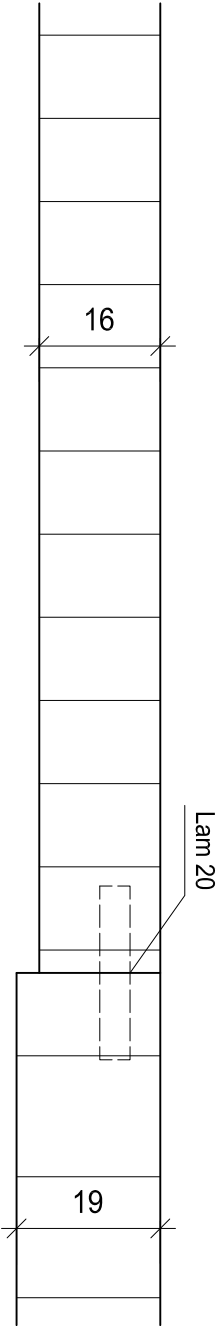
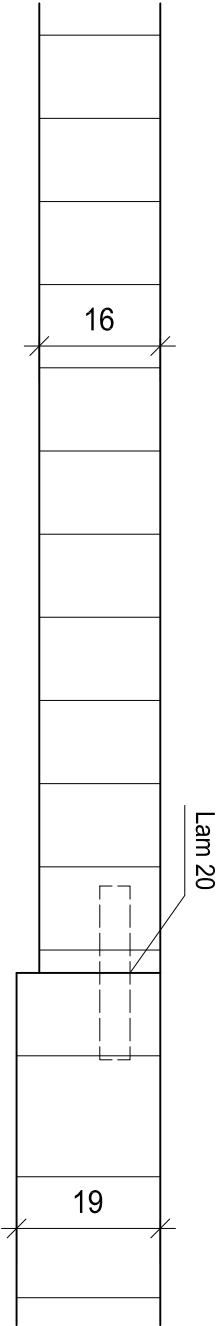
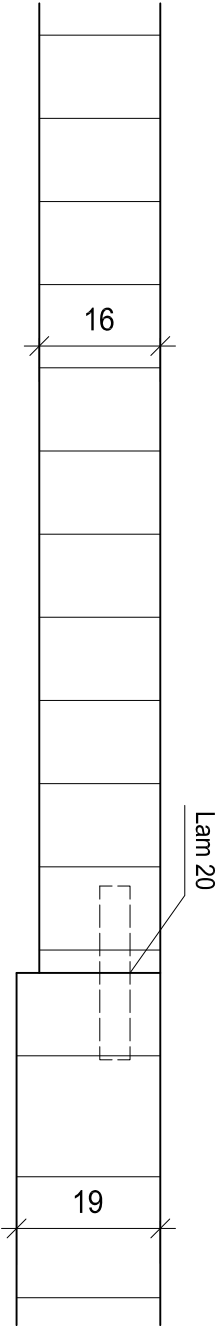
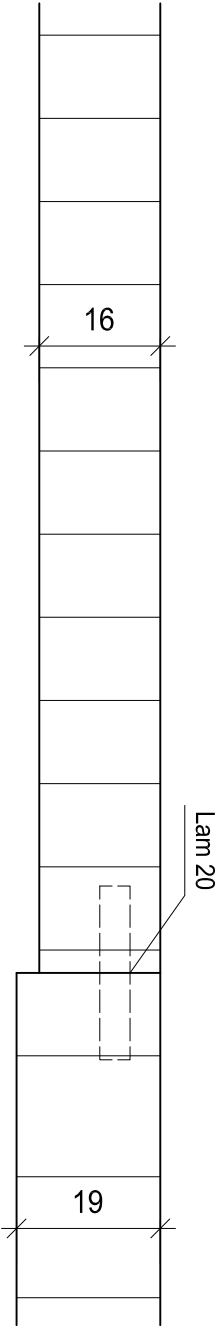
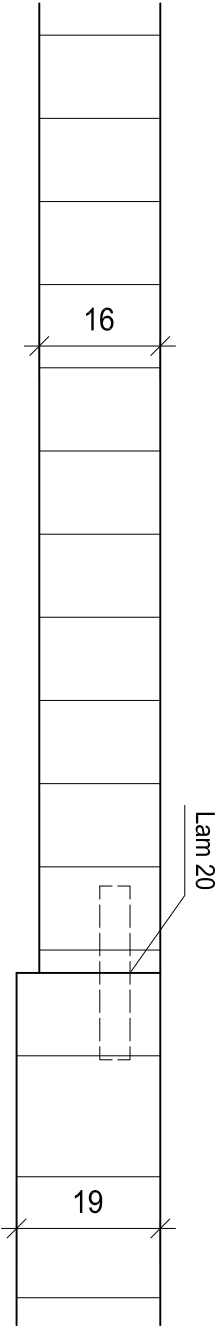
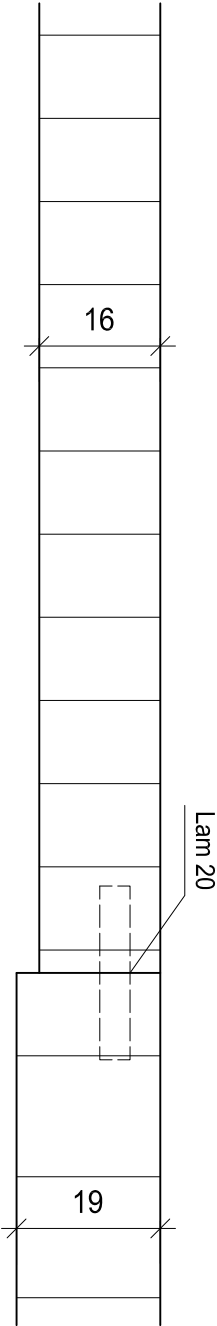
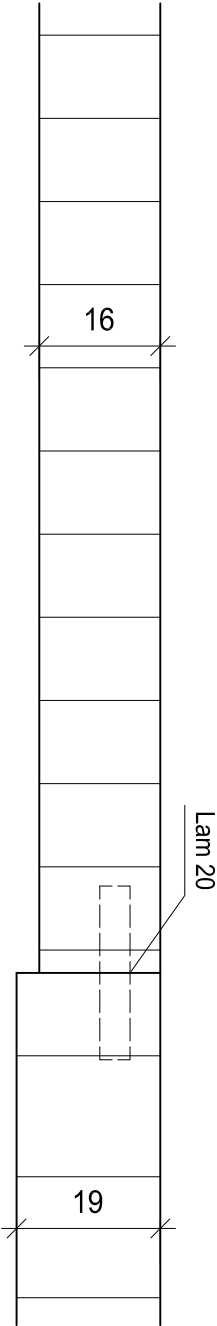
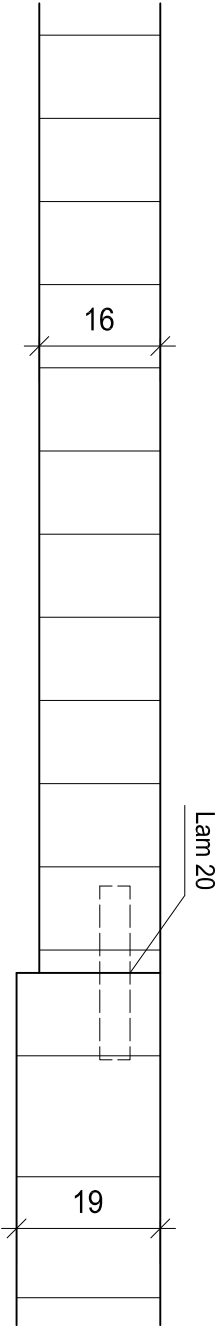
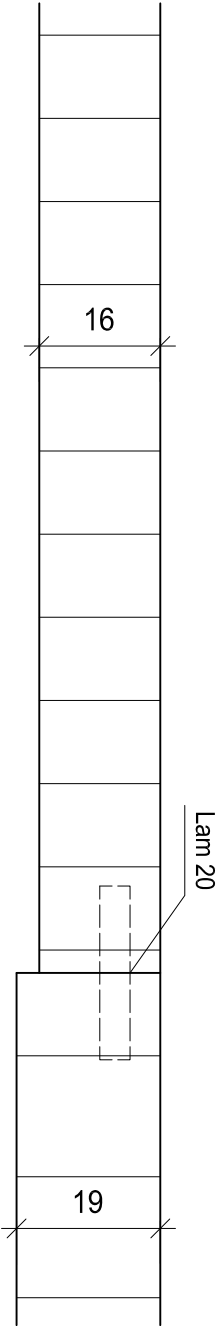
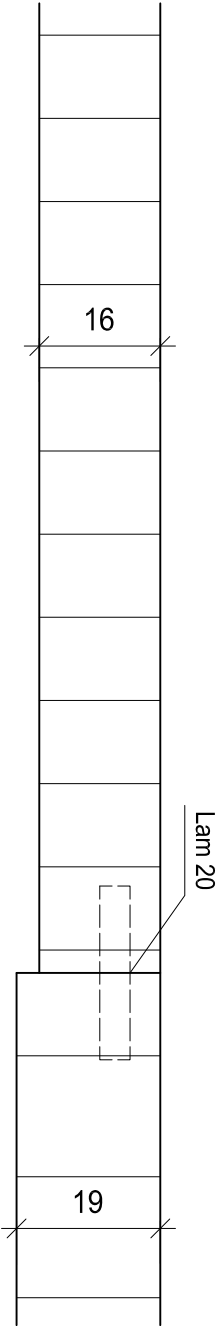
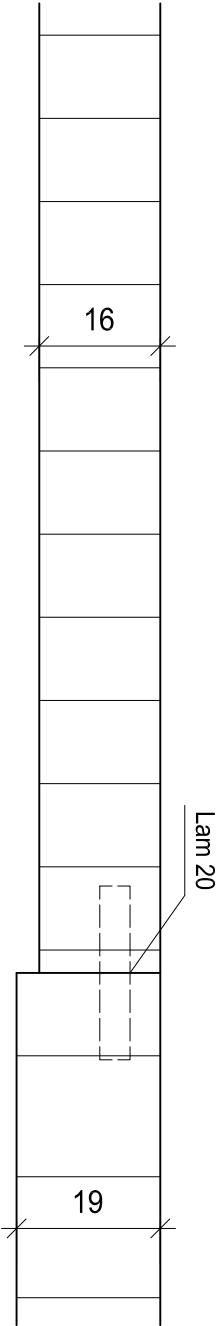
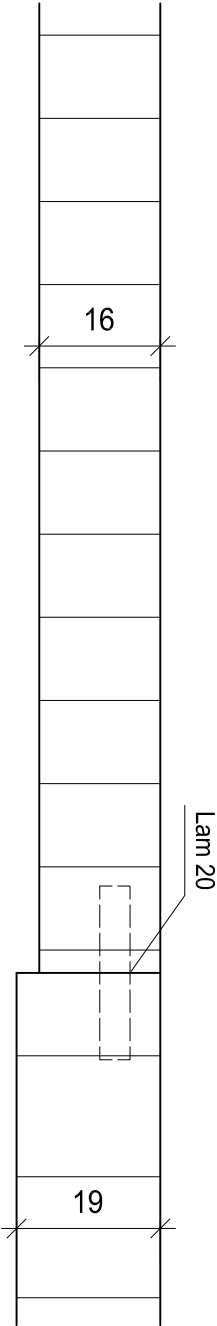
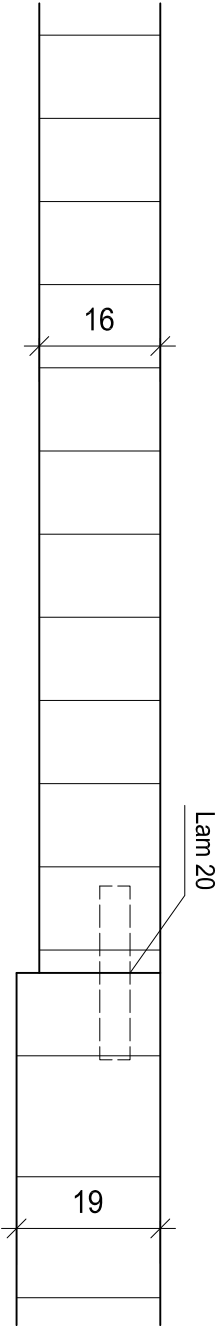
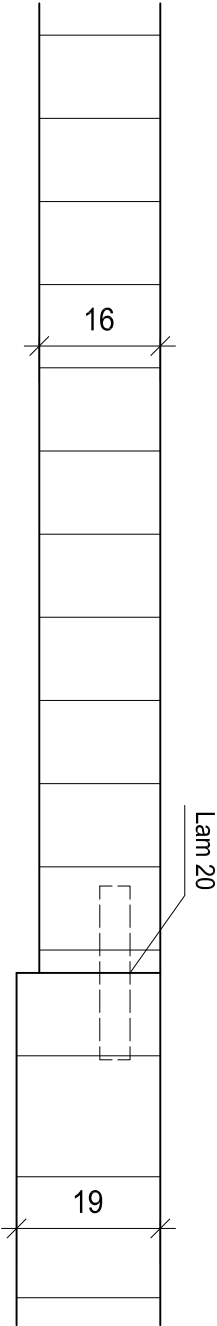
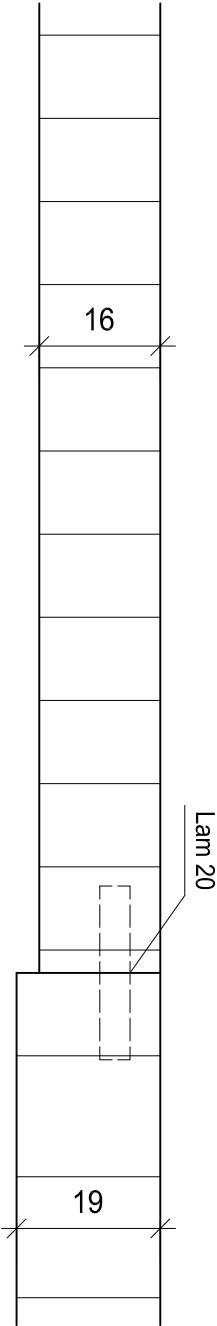
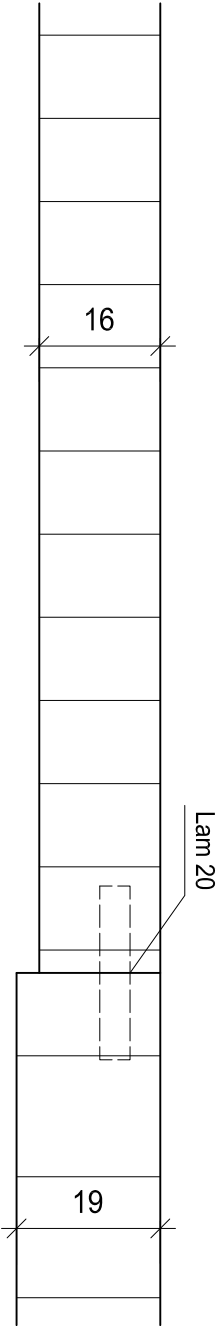
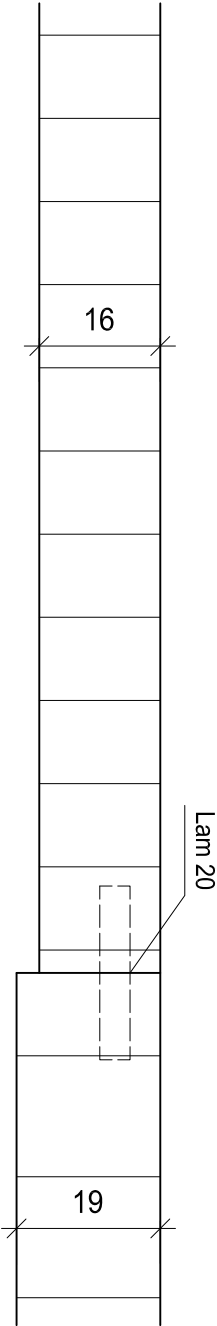
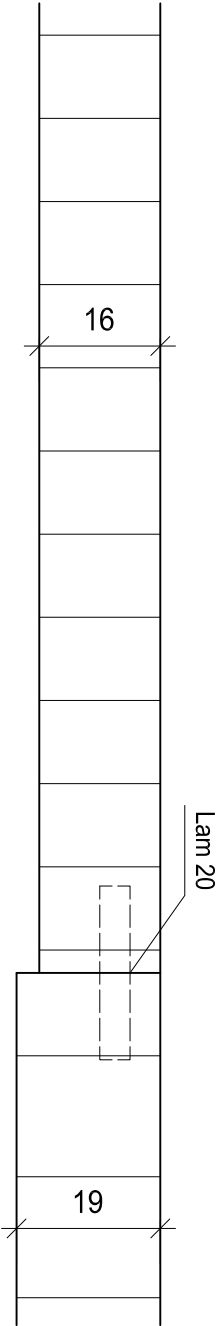
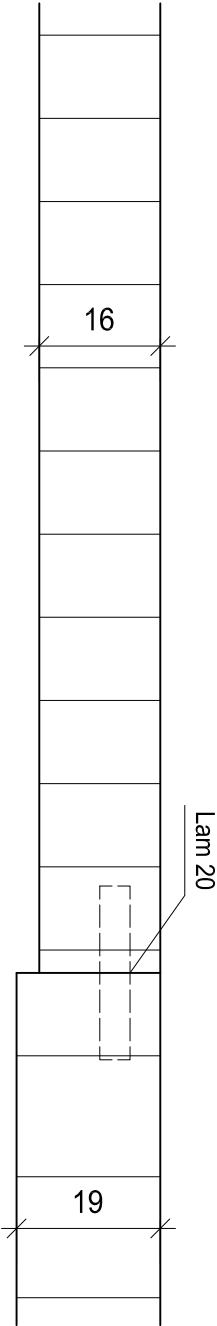
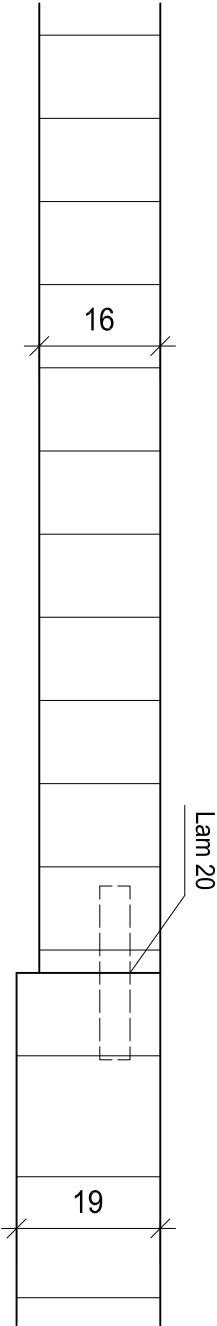
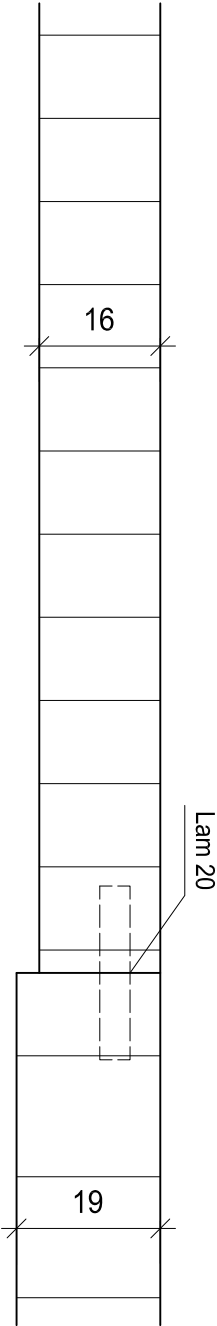
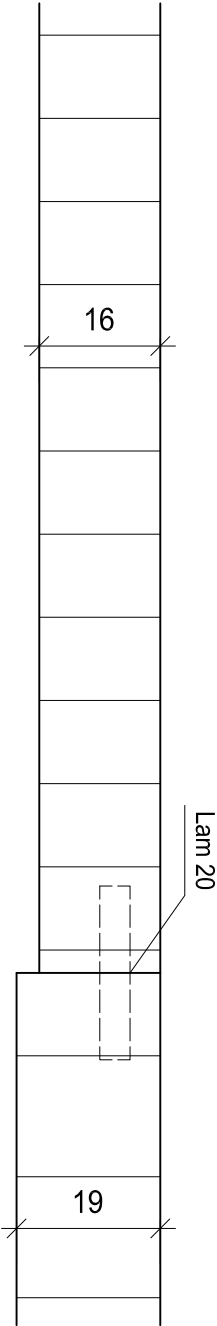
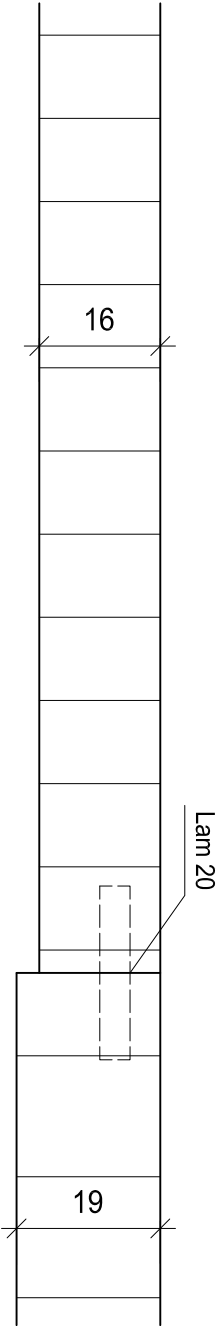
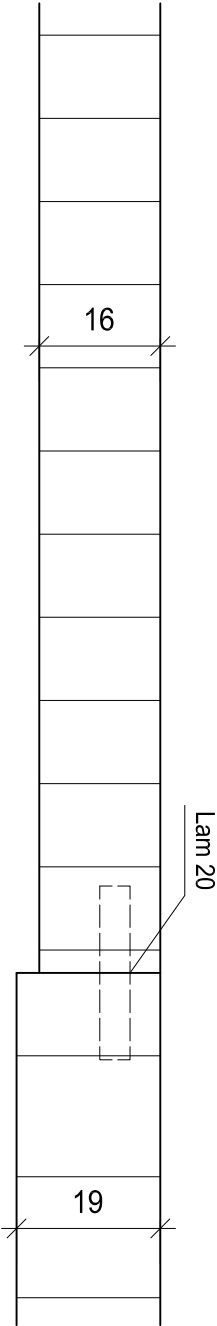
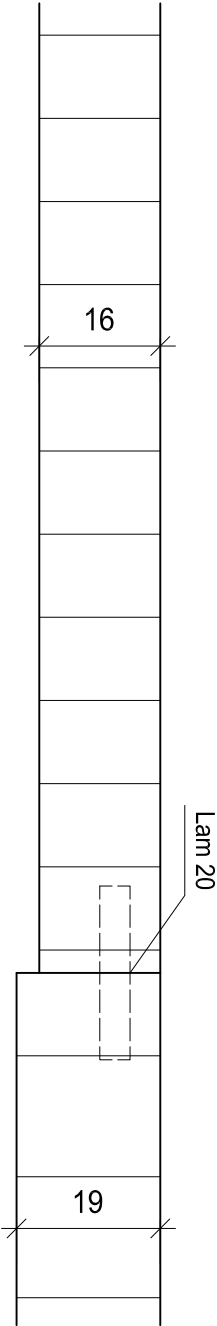
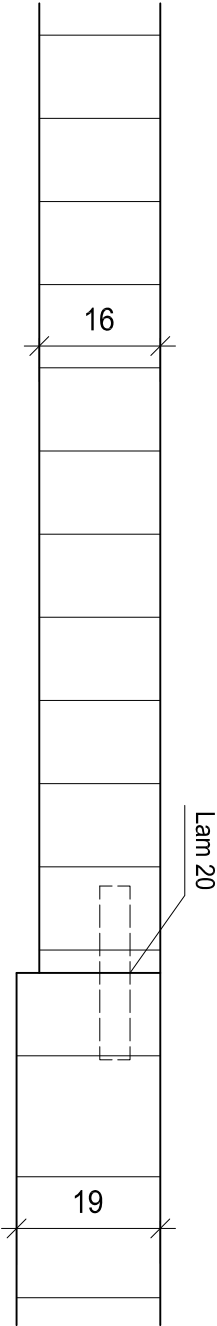
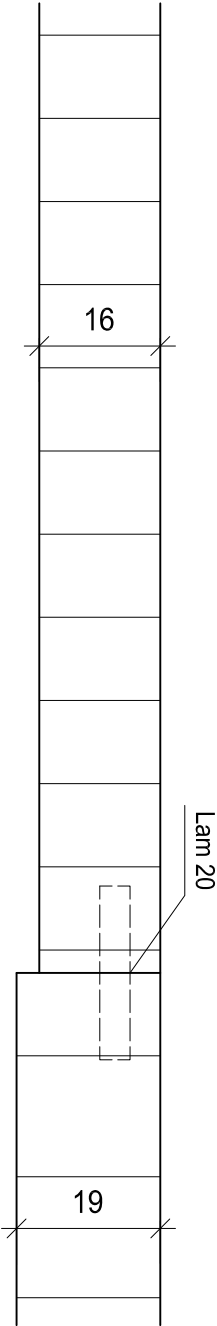
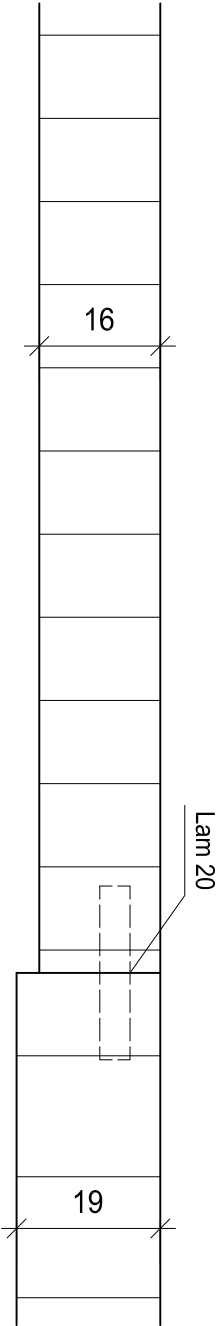
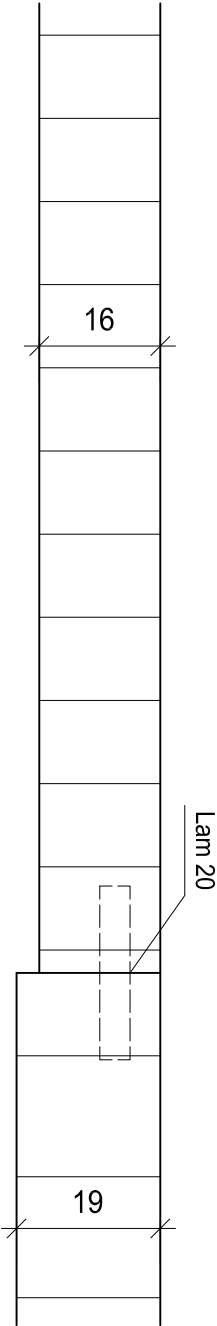
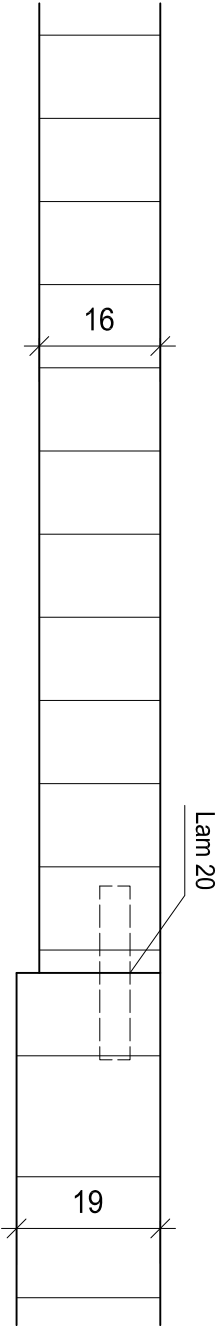
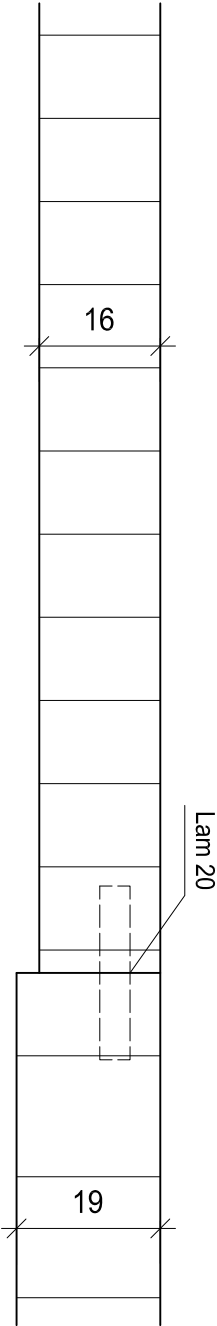
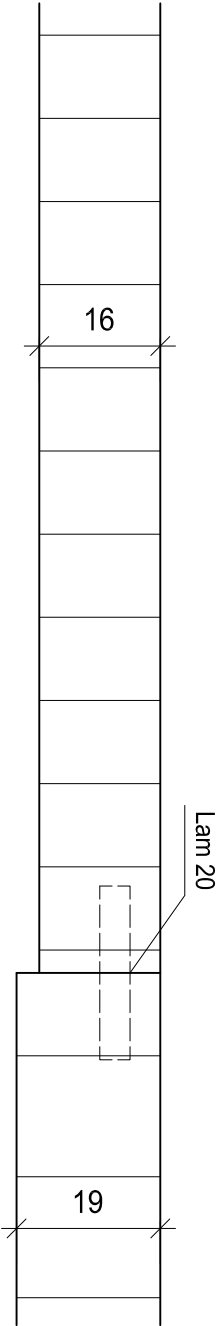
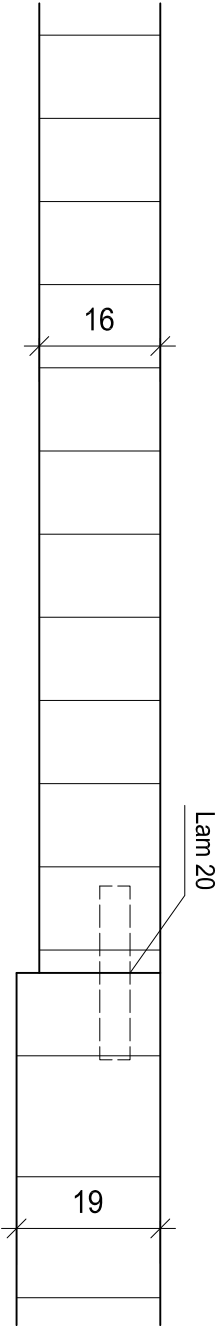
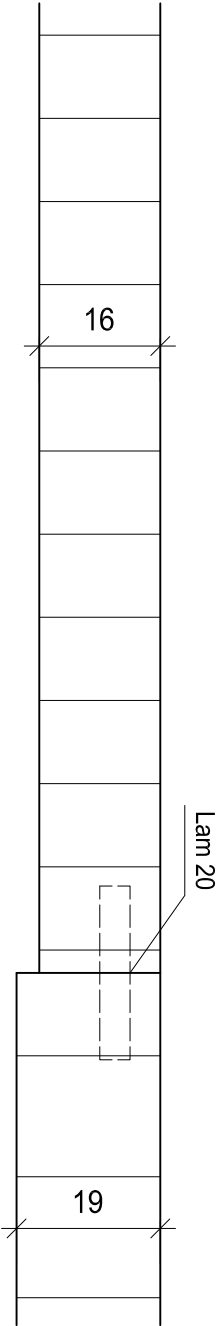
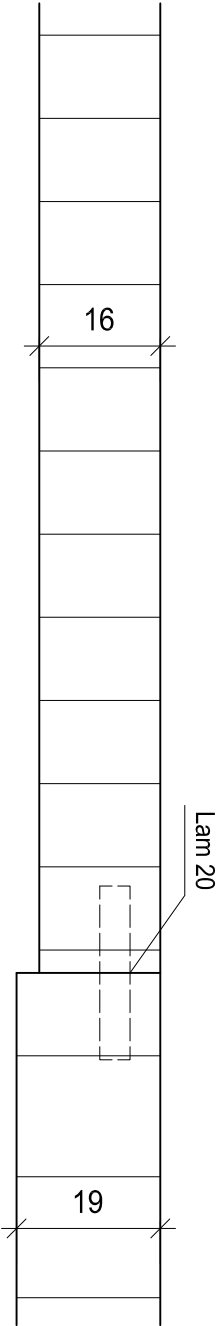
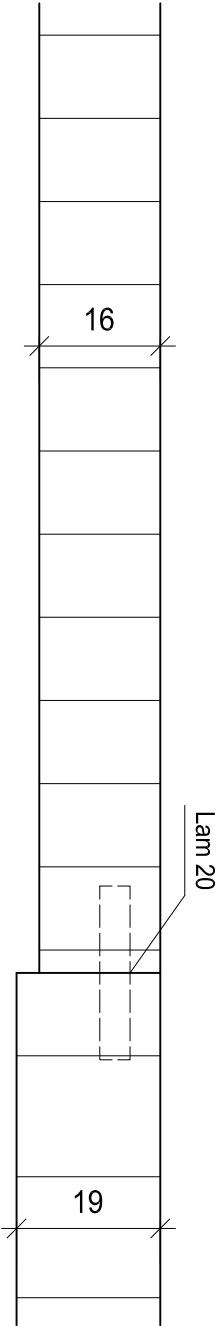
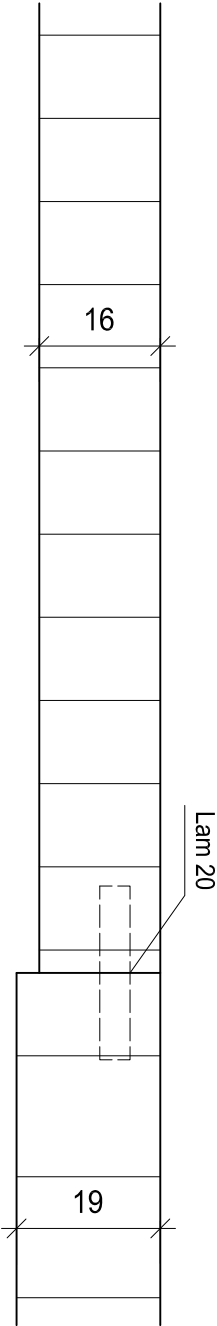
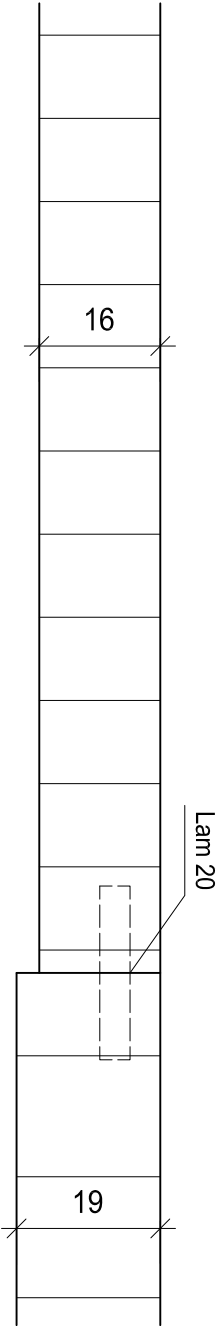
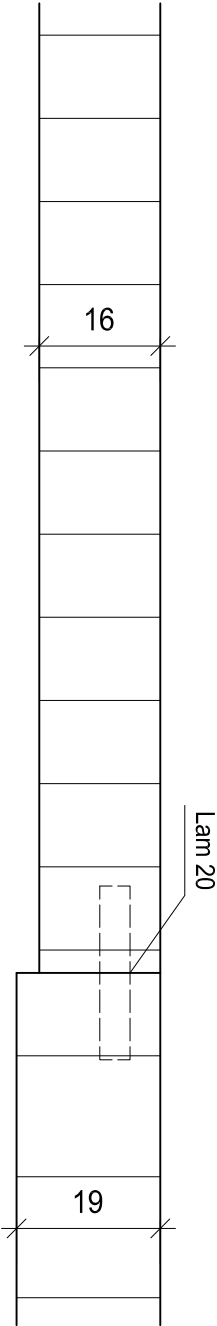
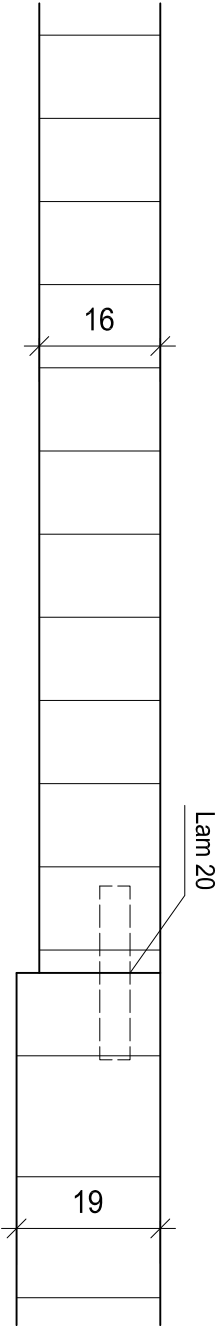
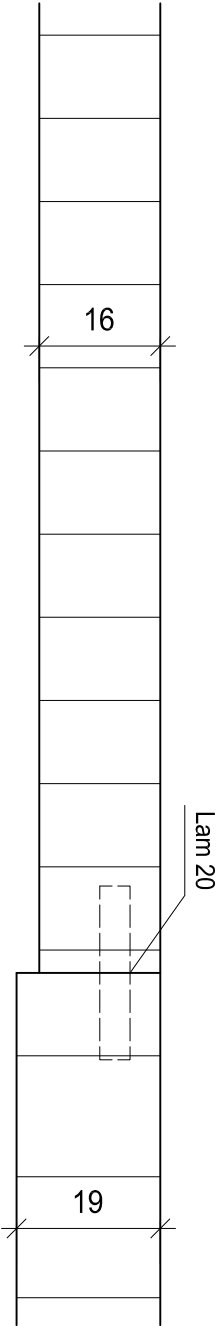
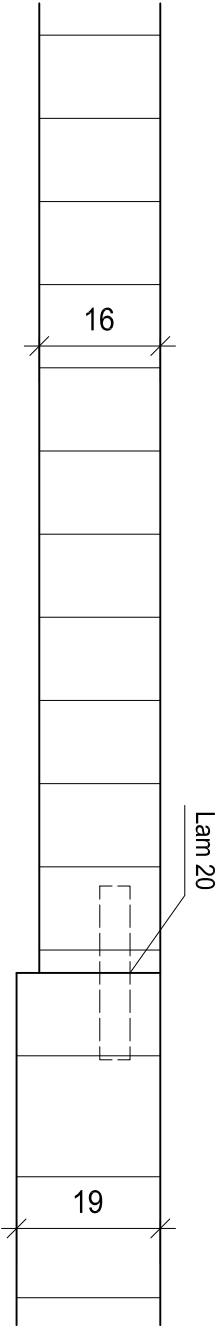
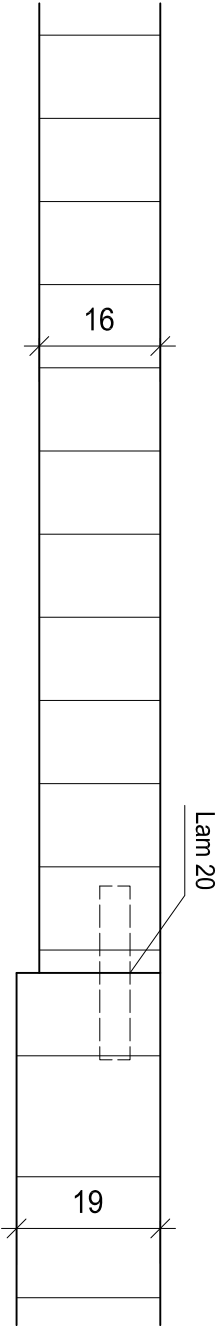
Lavoro con macchine portatili
Lamello
Seghetto alternativo (lento)

Lavori	Tracciatura (senza controllo)
Banco	Taglio pannelli
Sega circolare A	Esecuzione delle giunzioni
Lamello	Taglio grezzo del tondo
Seghetto alternativo	Rifinitura del tondo
Levigatrice per bordi	Rompere leggermente gli spigoli
Banco	Non pulire la superficie
	Non incollare

Werkstoffliste	Mat.	Pz.	Lung.	Larg.	spess.
Pannello centrale	Mel.	1	317.8	240	16
Pannello esterno	Mel.	1	275.4	150	19
Pannello esterno	Mel.	1	285.8	180	19
Pannello esterno	Mel.	1	278.8	160	19
Lamello Nr. 20		9			



A-A



Pannello con barra profilata

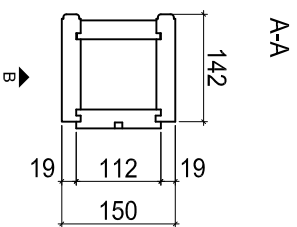
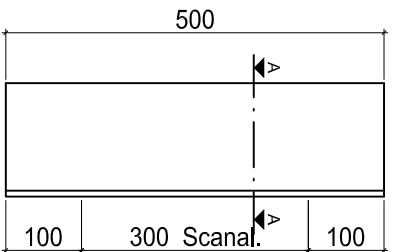
Lavoro con macchine stazionarie

Sagomatrice B

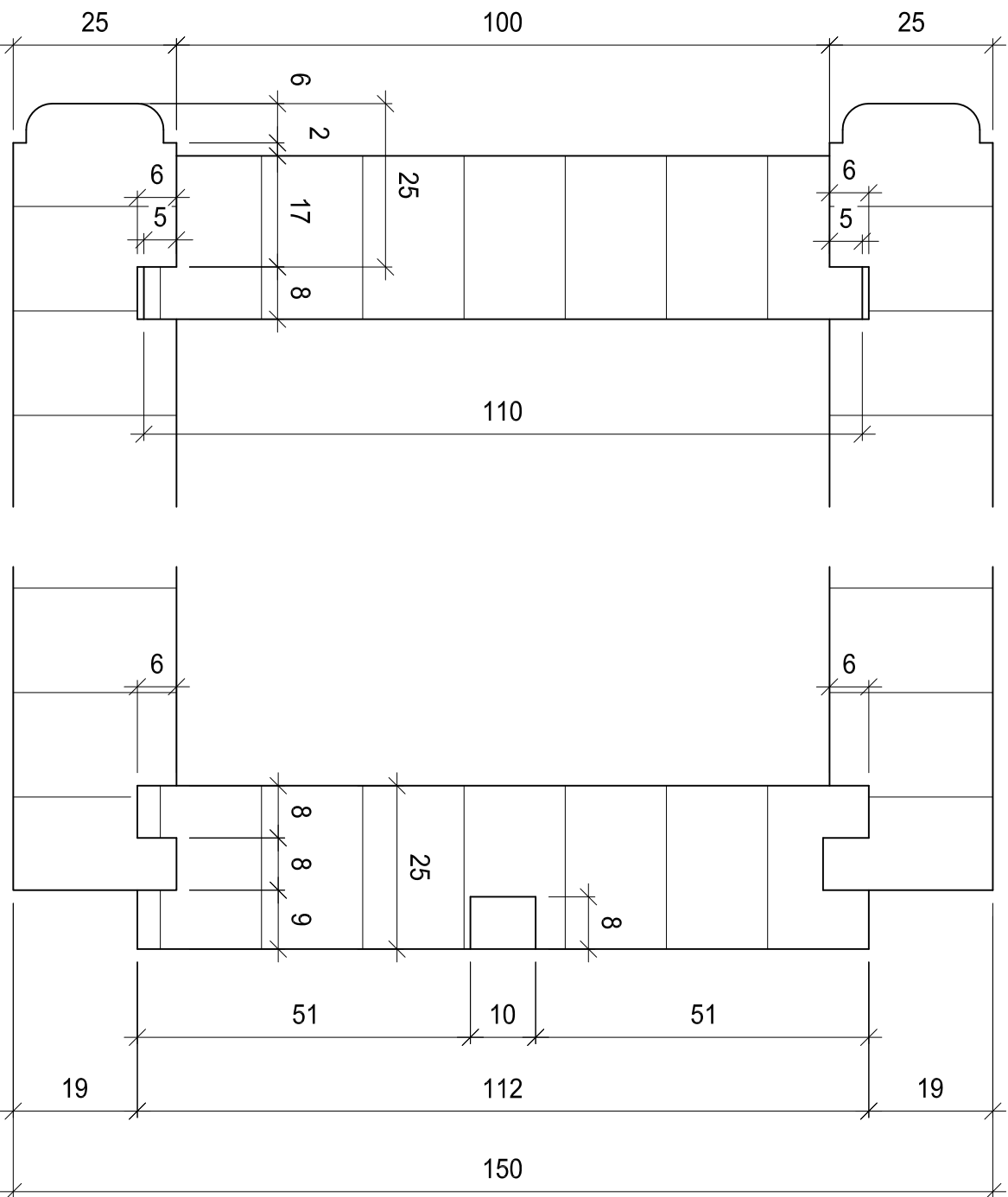
Lavori

Banco	Tracciatura
Sagomatrice B	Battute, Scanalature, Profilo
	Scanalatura interrotta
	Non Incollare
	Non Pulire

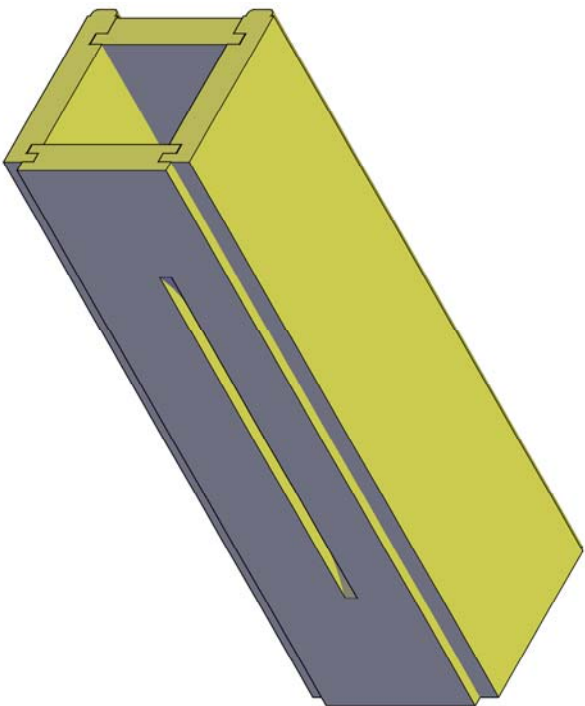
Lista materiale	Mat.	Pz.	Lung.	Larg.	Spes.
Fondo / Coperchio	MDF	2	500	142	25
Spalla	MDF	1	500	110	25
Spalla	MDF	1	500	112	25
Pezzi di prova	MDF	2	500	100	25



A-A



Profilo a seconda della fresa disponibile



8

il falegname

l'uomo che fa

www.luomochefac.it

Lavoro pratico

Esame fondamentale di base

6.Semestre

Associazione Svizzera Fabbricanti Mobili
e Serramenti

No. lavoro: 13a-P.8

Scala: 1:10 / 1:1

Dim. Foglio: 420 x 297

Data: 11.03.2013

Disegnatore ls

Giunzione a 3 incastri

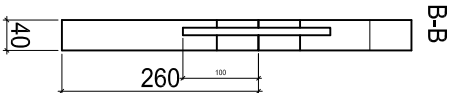
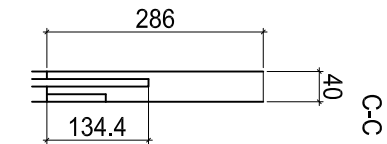
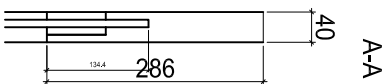
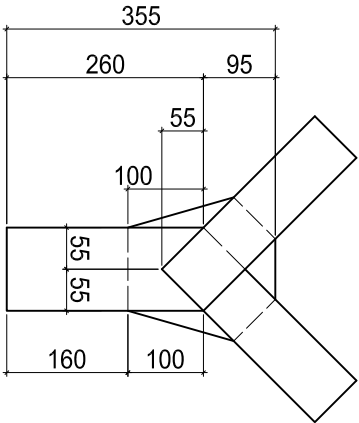
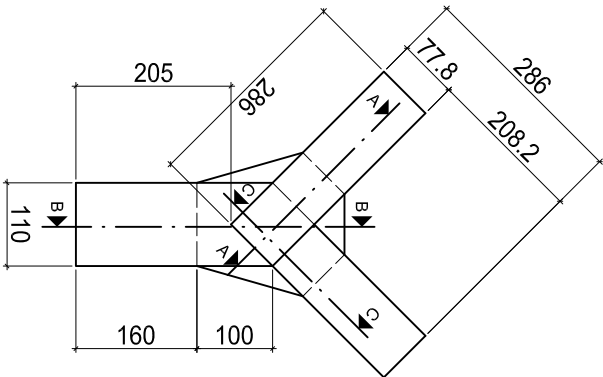
Lavori con macchine stazionarie

Sega a nastro	

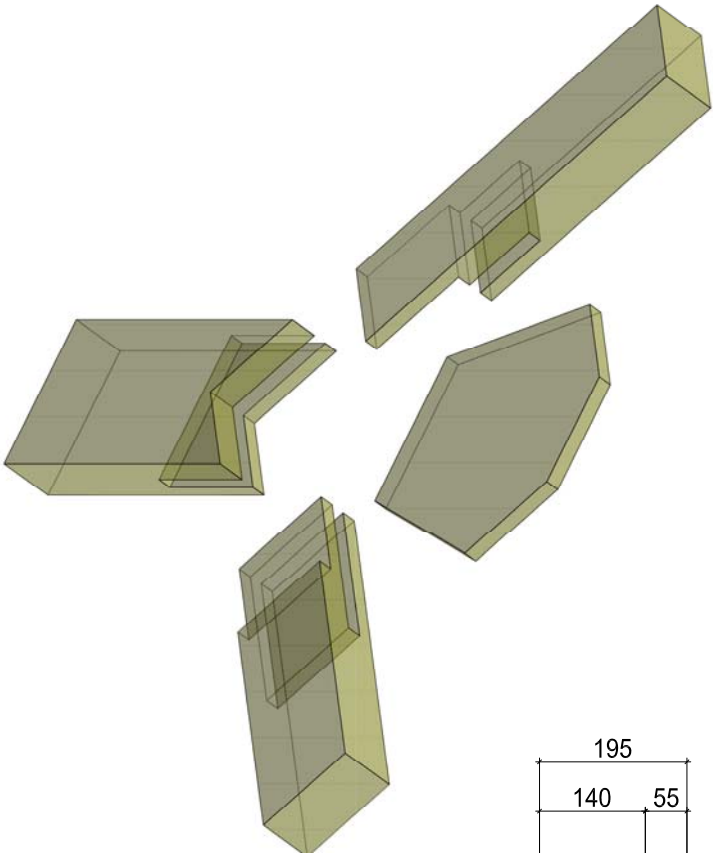
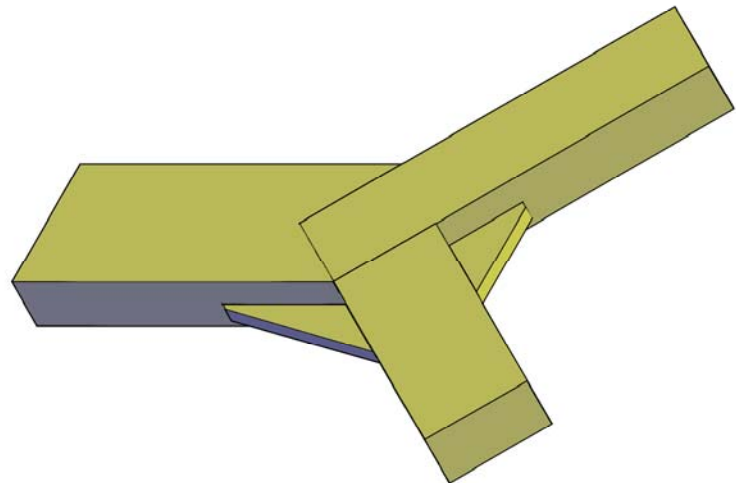
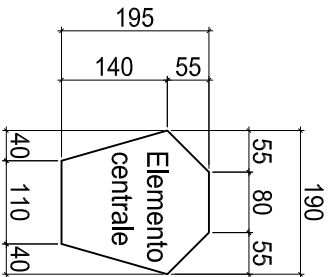
Lavori

Banco	Tracciatura
Sega a nastro	Lavorazione completa
	Non incollare
	Non pulire

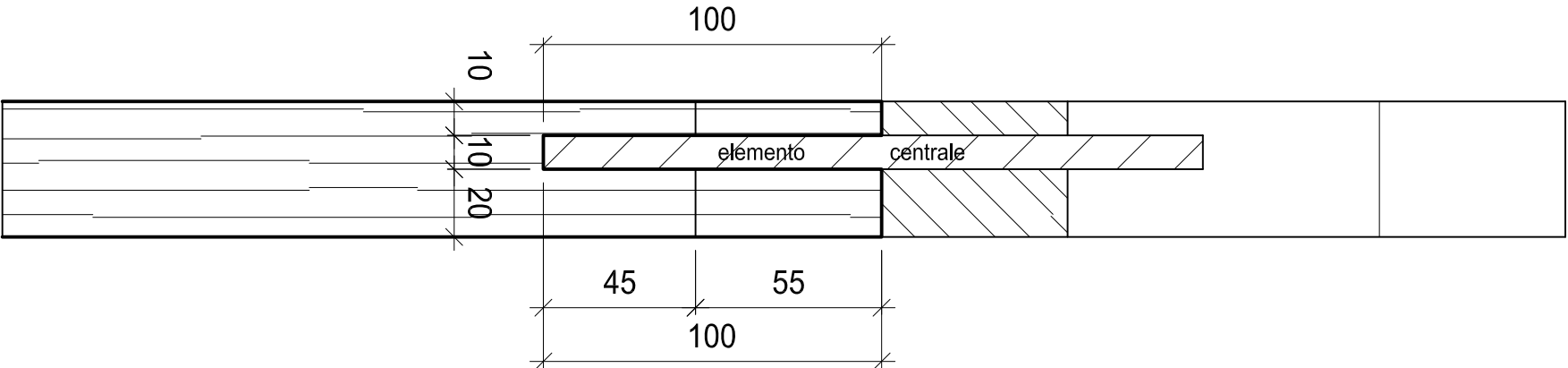
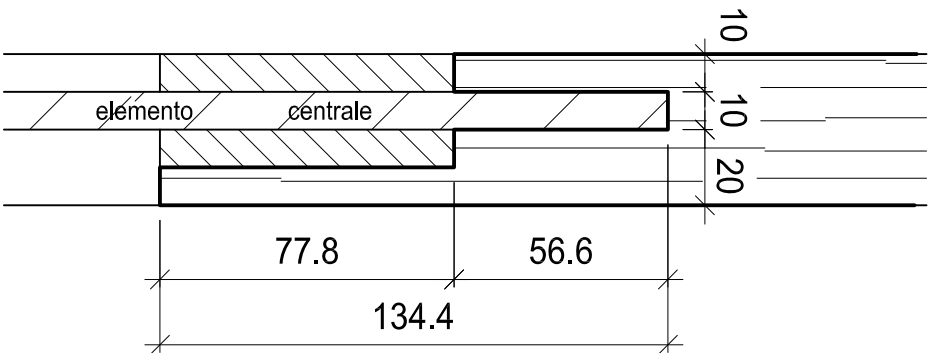
Lista materiale	Mat.	Pz.	Lung.	Larg.	Spes.
Traversi inclinati	C	2	286	77.8	40
Montante	C	1	260	110	40
Elemento centrale	C	1	195	190	10
Pezzi di prova	C	1	300	80	40



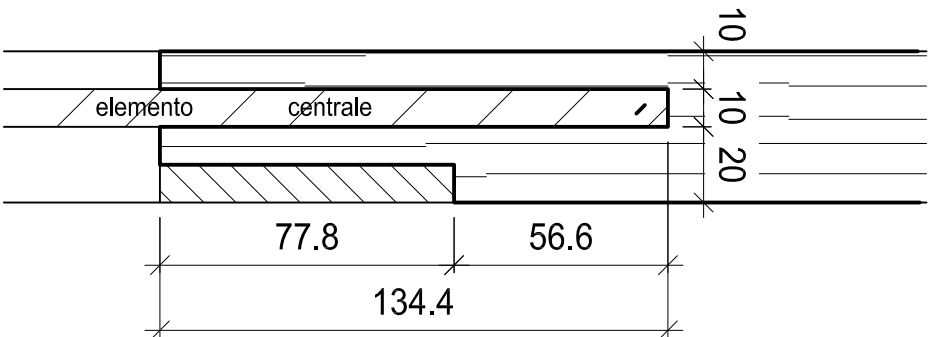
B-B



A-A



C-C



9

il falegname

l'uomo che fa

www.luomochefai.ch

Lavoro pratico

Esame fondamentale di base
6.Semestre

Associazione Svizzera Fabbricanti Mobili
e Serramenti

No. lavoro: 13a-P.9

Scala: 1:10 / 1:2

Dim. Foglio: 420 x 297

Data: 11.03.2013

Disegnatore

ls

Frammento con tagli inclinati

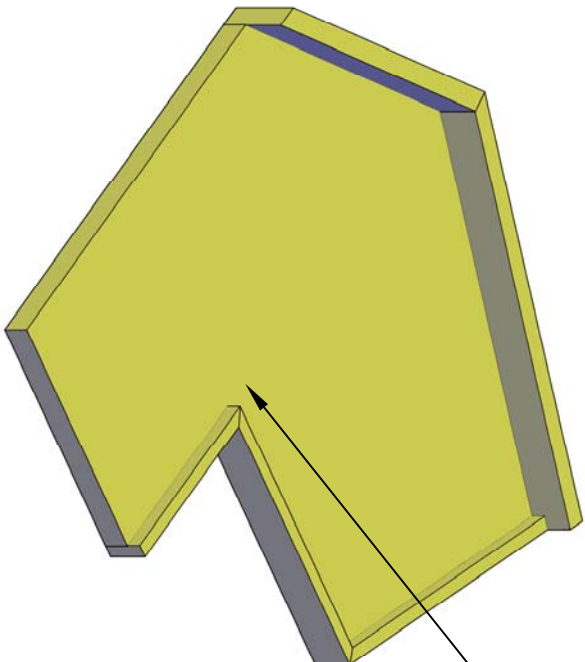
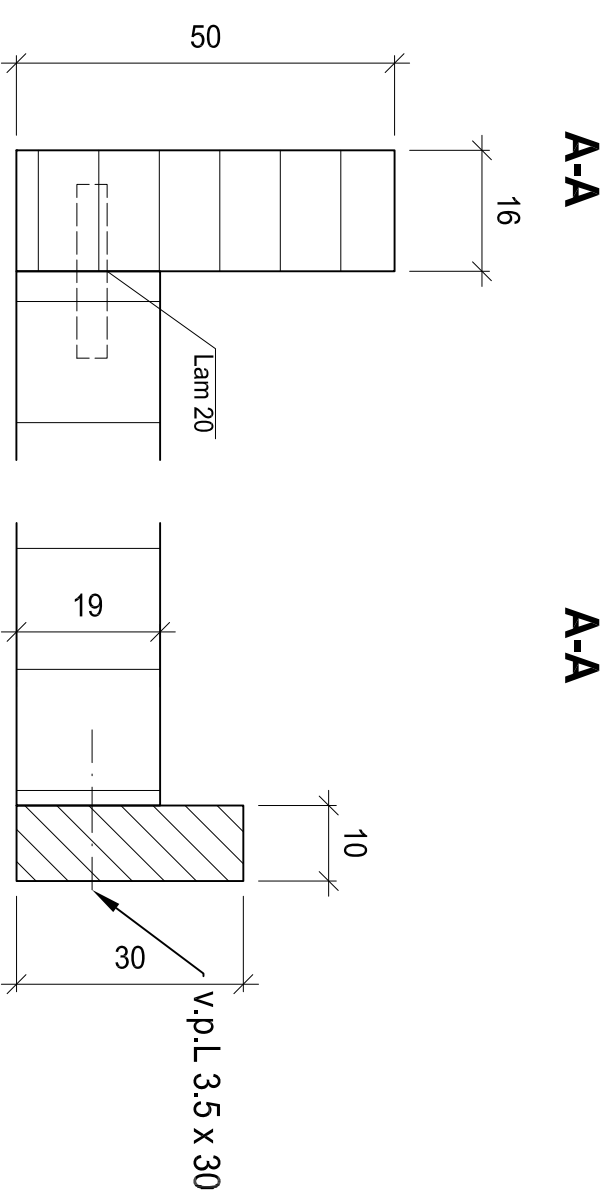
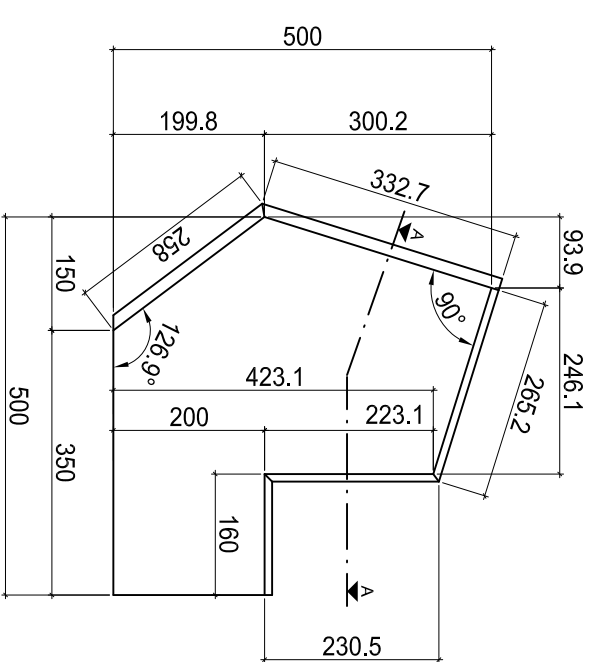
Lavori con macchine stazionarie

Sega circolare B

Lavoro con macchine portatili	
Lamello	
Taglia angaletti (troncatrice)	
Trapano a colonna	

Lavori	
Banco	Tracciatura (senza controllo)
Sega circolare B	Taglio dei pannelli
Lamello	Giunzioni
Sega circolare B	Lavorare le liste laterali
Taglia angaletti	Taglio delle liste di bordura
Trapano a colonna	Fori nelle liste di bordura
Banco	Rompere leggermente lo spigolo
	Non pulire la superficie
	Non incollare

Lista materiale	Mat.	Pz.	Lung.	Larg.	Spes.
Pannello	MDF	1	500	500	19
Lista laterale	MDF	1	332.7	50	16
Lista laterale	MDF	1	258	50	16
Lista di bordura	C	1	265.2	30	10
Lista di bordura	C	1	230.5	30	10
Lista di bordura	C	1	160	30	10
Viti v.p.L.		6	3.5 x 30		



Sopra a vista,
sotto non a vista

10

il falegname

l'uomo che fa

www.luonocherfa.ch

Lavoro pratico

Esame fondamentale di base

6.Semestre

Associazione Svizzera Fabbricanti Mobili
e Serramenti

No. lavoro: 13a-P.10

Scala: 1:10 / 1:1

Dim. Foglio: 420 x 297

Data: 11.03.2013

Disegnatore ls