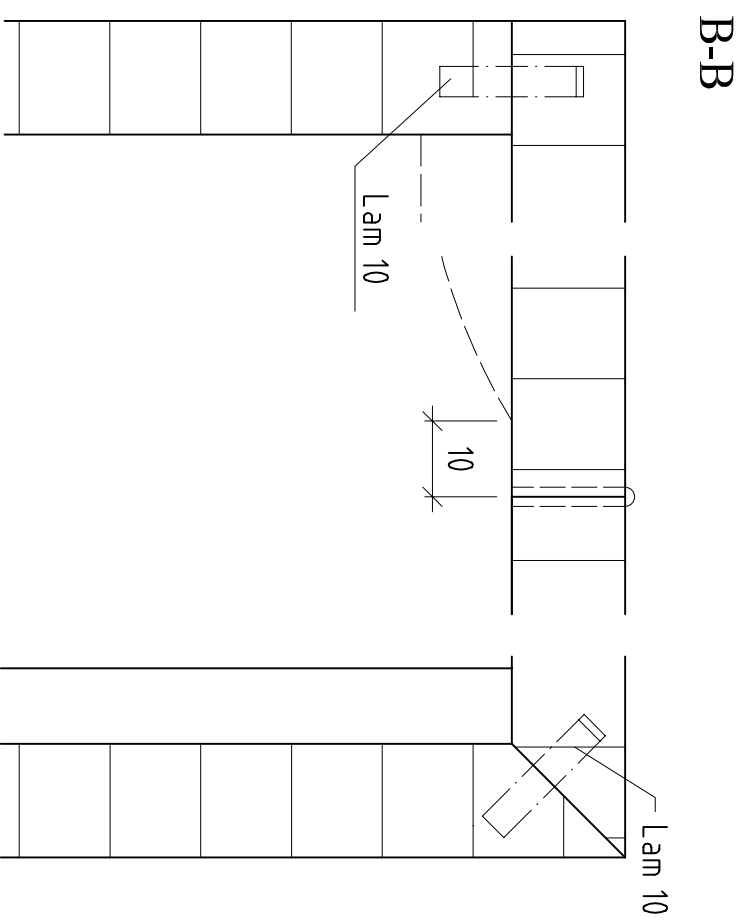
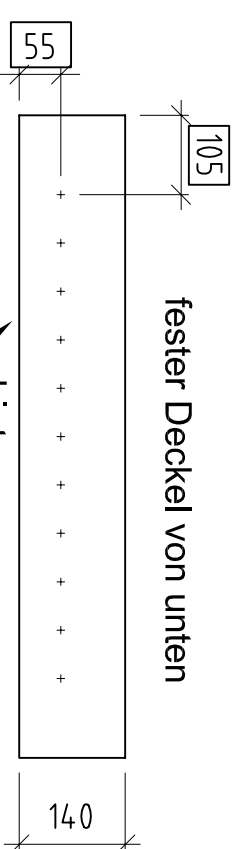
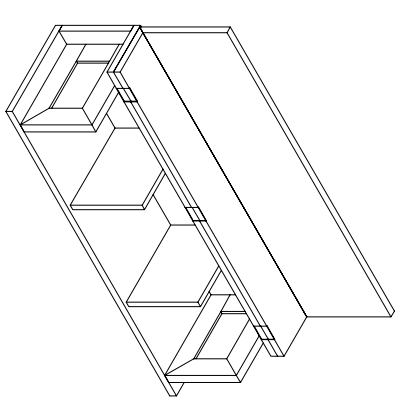
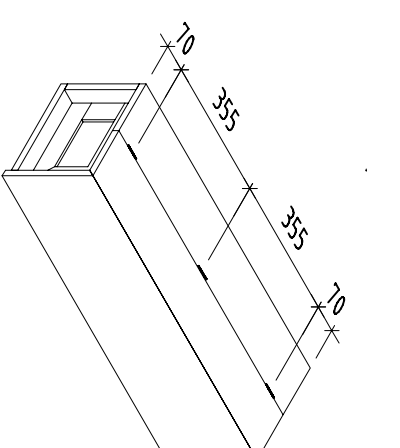


C-C

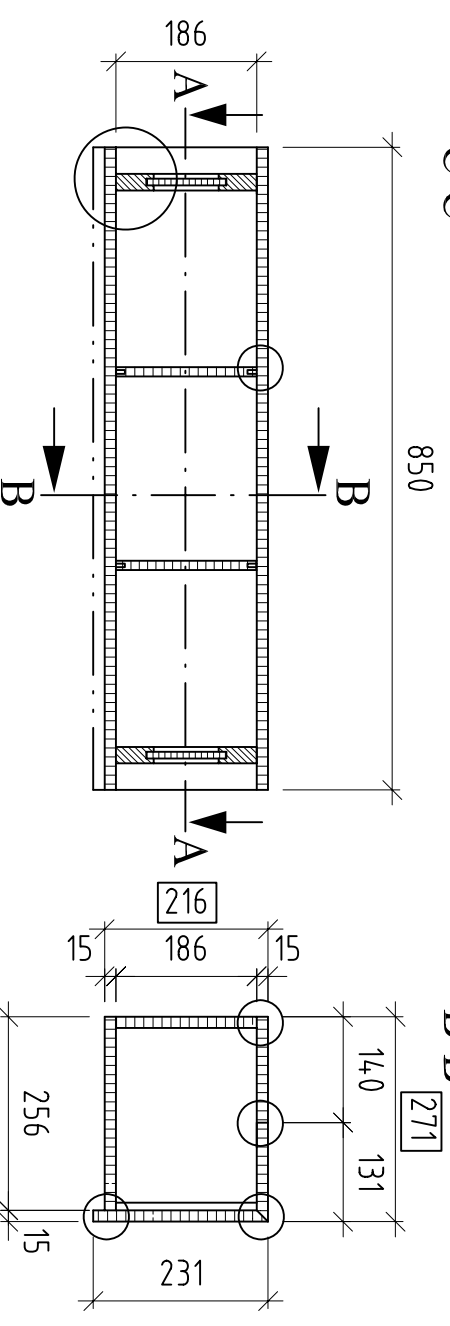


B-B



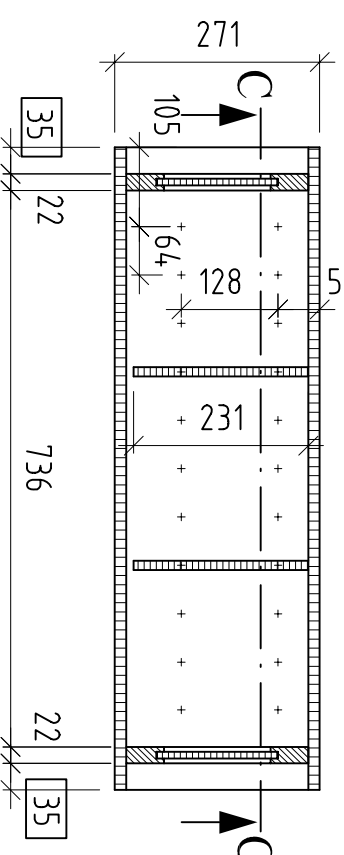
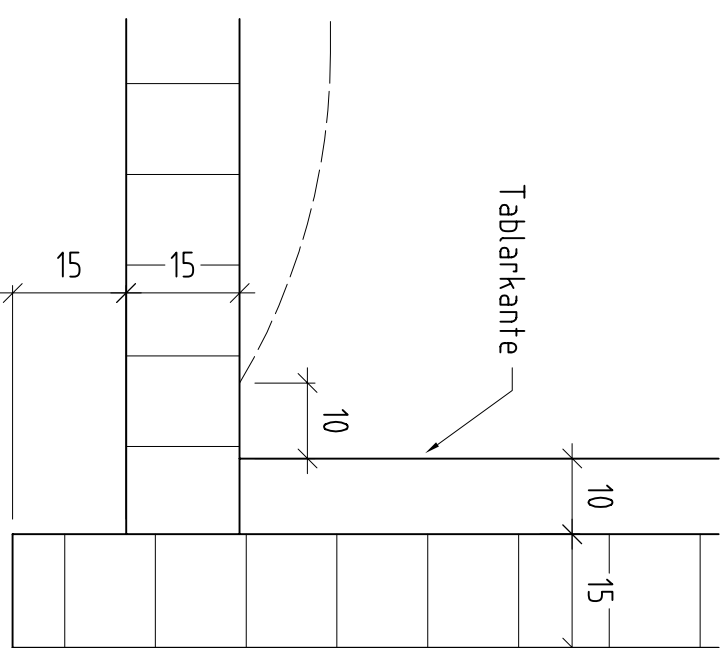
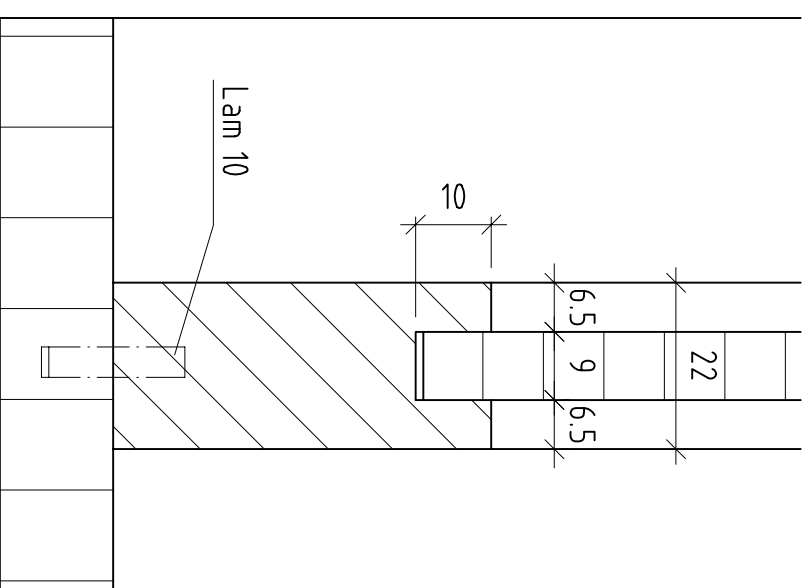
C-C

B-B



A-A

C-C



Box

WSC - Zyklus 06/07

Japan

Verband Schweizerischer Schreinermeister  
und Möbelfabrikanten



Aufgaben-Nr.: 2005-01-A

Massstab: 1:10 / 1:1

Plangröße: 290 x 420

Datum: 16.11.05

Gezeichnet: ls